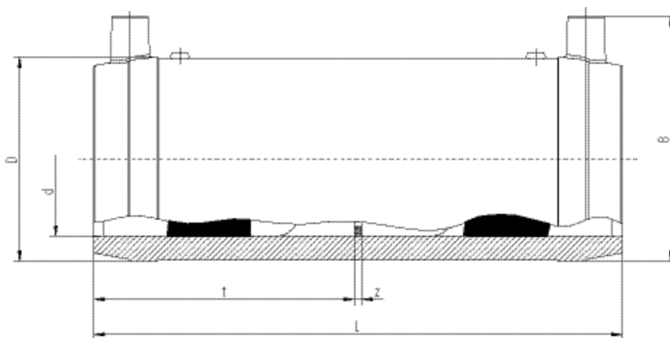


FRIALONG

ηλεκτροσύνδεσμοι μεγάλου μήκους με αφαιρούμενο στοπ

The coupler with more safety aspects. With exposed heating coils for optimal heat transfer, extra large insertion depth, extra wide fusion zones plus cold zones at the end. For best possible pipe installation and tension-free fusion without holding devices.



PE 100 SDR 11

Maximum working pressure 16 bar (water)/10 bar (gas)



Κωδικός προϊόντος	d	BX	PU	D	L	t	B	Z	Weight kg
615736	32	40	1280	45	136	67	62	2	0,110
615737	40	30	960	54	146	72	72	2	0,140
615608	50	16	512	68	175	86	86	2	0,250
615738	63	10	320	82	197	97	97	2	0,370

FRIALEN-Safety Fittings can be fused to pipes of SDR stages 11 to 17.6. Minimum wall thickness $s_{min} \geq 3$ mm. Other SDR-stages on request. Please observe the marking directly at the product, which is mandatory. DVGW-Registration No.: DV-8601AU2248

FRIALONG

ηλεκτροσύνδεσμοι μεγάλου μήκους με αφαιρούμενο στοπ

Areas of Application

The FRIALEN Long Coupler FRIALONG is the ideal connection coupler when installing pipes as coiled pipes for domestic connections from d 32 to d 63. This occurs when coiled pipes and

weld-on ends of valves or house entries are joined together, and especially when both pipe ends come from coiled pipes.

Assembly Instructions

The fusion of pipe ends with the FRIALEN long coupler FRIALONG takes place using FRIALEN fusing – leakproof and longitudinally strong.

The pipe ends are prepared according to the general installation instructions (see "Assembly Instructions" for FRIALEN Safety Fittings for house connections and distribution pipes (Remove oxide skin/clean). It is important to make sure that the outlet spigots of valves and fittings are at least half as long as the coupler.

Good reasons for using the FRIALEN Long Coupler FRIALONG:

Increased installation safety when using coiled pipe in domestic connections

Up to 80% longer than standard FRIALEN Couplers

Extremely long guiding and retaining zones for taking up coiled pipe

An alignment function for curved pipe ends is achieved by an extra large insertion depth within the coupler which includes long cold zones

Exposed heating coil and exceptionally wide fusion zones ensure optimum heat transmission

No additional tools (holding clamp) required

All this means fewer and easier steps with increased safety during processing

Center stop easily removable

Additional barcode for tracing back the underground fitting (Traceability-Coding)