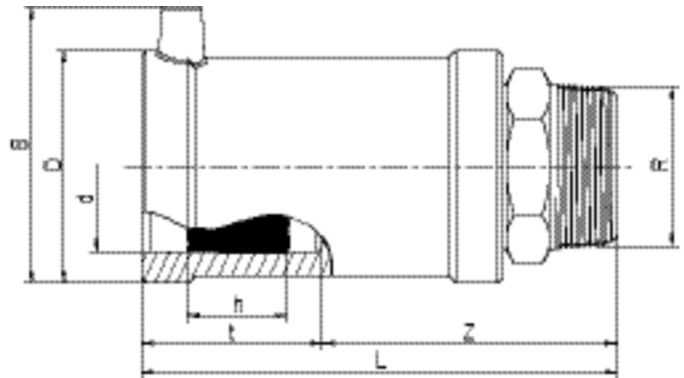


USTN

Μεταβατικά κομμάτια HD-PE/Steel with male thread

Compact transition fitting. HD-PE end with exposed heating coils for optimal heat transfer, large insertion depth, wide fusion zone plus cold zones at the end and in the transition area to prevent the flow of molten material for use without holding devices. Steel end permanently anchored in the HD-PE. Self sealing patented sealing geometry without elastomer seal. For use in gas systems.

Other thread sizes on request



PE 100 SDR 11

Maximum working pressure 5 bar (gas)



Κωδικός Προϊόντος	d	BX	PU	D	R	L	t	z	h	B	Weight kg
612580	32	20	1080	47	1"	119	42	77	24	61	0,345
612582	40	20	800	58	1 1/4"	131	46	86	30	70	0,530
612584	50	15	600	70	1 1/2"	146	53	93	30	80	0,700
612586	63	10	400	84	2"	152	53	99	35	94	1,050

Other thread sizes on request

FRIALEN safety fittings can be fused to pipes SDR11 - SDR 17,6, minimum wall thickness $s_{min} \geq 3$ mm. Other SDR-stages on request. Please observe the marking directly at the product, which is mandatory. DVGW-Registration No. DV-7501AU2256

USTN

Μεταβατικά κομμάτια HD-PE/Steel with male thread

Areas of Application

The FRIALEN-Transition Fittings USTN are threaded joints as an adaptor from a metal pipe with threaded socket to a HD-PE pipe. Joint on the part of HD-PE by FRIALEN-Coupler.

Assembly Instructions

The threaded component must be held with a spanner to prevent it twisting in the HD-PE component. The fusion of the HD-PE side takes place by FRIALEN-fusing – leakproof and longitudinally strong. The installation of the steel and the HD-PE side has to be prepared according to the general installation instructions (see "Transition Fittings with threaded connection" in "Assembly Instructions" for "FRIALEN-Safety Fittings for house connections and distribution pipes up to d 225"). This involves removing the oxide skin and cleaning the pipe ends.

Good reasons for using the FRIALEN USTN:

Compact construction

HD-PE side with exposed heating element for optimal heat transfer

Cold zones at the end to prevent the flow of molten material

No holding clamps required

Large insertion depth, extra wide fusion zones

Steel end permanently anchored in the HD-PE and will not distort

Self sealing patented sealing geometry without elastomer seal

Additional barcode for tracing back the fitting (Traceability-Coding)