

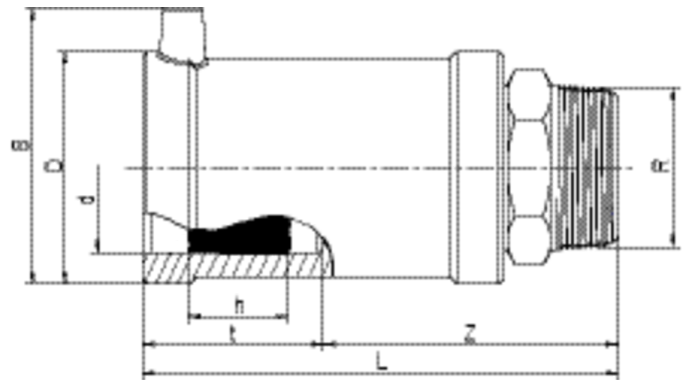
MUN

Μεταβατικά κομμάτια HD-PE/Brass

Compact transition fitting. HD-PE end with exposed heating coils for optimal heat transfer, large insertion depth, wide fusion zone plus cold zones at the end and in the transition area to prevent the flow of molten material for use without holding devices. Brass end permanently anchored in the HD-PE. Self sealing patented sealing geometry without elastomer seal. For use in water systems.

Standard: Brass. Gunmetal on request

Other thread sizes on request



PE 100 SDR 11

Maximum working pressure 16 bar (water)



Κωδικός Προϊόντος	d	BX	PU	D	R	L	t	z	h	B	Weight kg
612712	32	20	1440	47	1"	112	42	70	24	61	0,320
612709	32	20	1080	47	1 1/4"	120	42	70	24	61	0,400
612698	32	15	810	47	1 1/2"	121	42	70	24	61	0,450
612721	40	20	800	58	1"	123	46	75	30	70	0,460
612713	40	20	800	58	1 1/4"	126	46	77	30	70	0,490
612718	40	20	800	58	1 1/2"	127	46	78	30	70	0,520
612725	40	20	600	58	2"	132	46	86	30	70	0,680
612719	50	15	600	70	1"	134	53	81	30	80	0,620
612716	50	15	600	70	1 1/4"	136	53	83	30	80	0,620
612714	50	15	600	70	1 1/2"	137	53	84	30	80	0,620
612706	50	15	600	70	2"	147	53	94	30	80	0,760
612722	63	10	400	84	1 1/4"	138	53	84	35	94	0,920
612717	63	10	400	84	1 1/2"	137	53	84	35	94	0,910
612715	63	10	400	84	2"	142	53	89	35	94	0,920

Other thread sizes on request

FRIALEN safety fittings can be fused to pipes SDR11 - SDR 17,6, minimum wall thickness $s_{min} \geq 3$ mm. Other SDR-stages on request. Please observe the marking directly at the product, which is mandatory. DVGW-Registration Nos. DV-7501AU2256 and DV-7501AU2257

MUN

Μεταβατικά κομμάτια HD-PE/Brass

Areas of Application

FRIALEN-Transition Fittings MUN are threaded joints as an adaptor from a metal pipe with internal thread to a HD-PE pipe. Joint on the part of HD-PE by FRIALEN-Coupler.

Assembly Instructions

The threaded component must be held with a spanner to prevent it twisting in the HD-PE component. The fusion of the HD-PE side takes place by FRIALEN-fusing – leakproof and longitudinally strong.

The installation of the brass and the HD-PE side has to be prepared according to the general installation instructions (see "Transition Fittings with threaded connection" in "Assembly Instructions" for "FRIALEN-Safety Fittings for house connections and distribution pipes up to d 225"). This involves removing the oxide skin and cleaning the pipe ends.

Good reasons for using the FRIALEN-Transition Fittings MUN:

Compact construction

HD-PE side with exposed heating element for optimal heat transfer

Cold zones at the end to prevent the flow of molten material

No holding clamps required

Large insertion depth, extra wide fusion zones

Brass end permanently anchored in the HD-PE and will not distort

Self sealing patented sealing geometry without elastomer seal

Additional barcode for tracing back the fitting (Traceability-Coding)