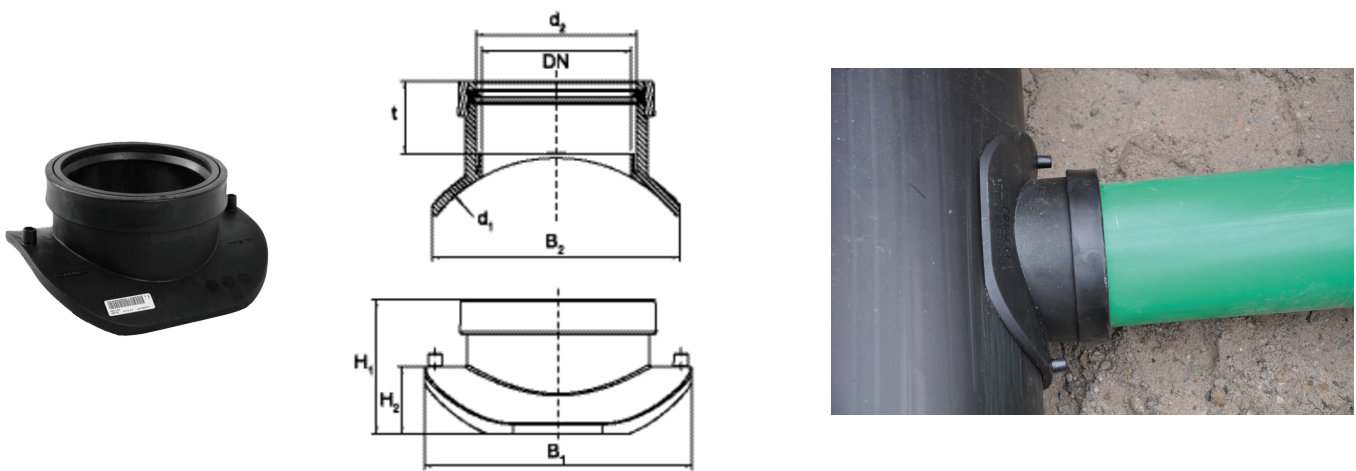


ASA VL KG 160

Σέλα ηλεκτροσυγκόλλησης

for joining PVC / PP pipes DN 150 to HDPE sewage drains, for top loading fusion of HDPE pipes SDR 33 – SDR 11

The FRIAFIT transition saddle ASA TL KG is a compact component consisting of a fusion saddle with an integral fusion coupler at its outlet (d 160). The FRIAFIT transition saddle is used to connect PVC/PP DN 150 sewer pipes to an existing HD-PE main sewer. With exposed heating element for optimal heat transfer. Tapping area free of heating wires. The FRIAFIT transition saddle is fixed onto the pipe using the FWFIT clamping and drilling unit (see application picture and product range FRIATOOLS order no. 613480) and tapping takes place after the specified cooling time.



PE 100

Maximum testing pressure 0.5 bar in accordance to DIN EN 1610

Κωδικός προϊόντος	product.detail.attribute.d1Small	d ₂	DN	BX	PU	t	H1	H2	B1	Weight kg
682624	225	160	150	8	64	76	165	94	270	1,050
682625	280	160	150	10	80	76	143	72	270	1,040
682626	315	160	150	10	80	76	139	68	270	1,060
682627	355	160	150	10	80	76	129	58	270	1,060
682628	450	160	150	10	80	76	117	46	270	0,990
682629	500/560/630	160	150	10	80	76	117	46	270	0,940

For the assembly on close-fit-liner and d 560 and d 630 please contact our hotline +49 621 486-1896.

ASA VL KG 160

Σέλα ηλεκτροσυγκόλλησης

Sewage pipe systems are high-value assets of a value which has to be maintained for a long time. Increasing demands on the public sewage system require materials which meet these criteria. HDPE sewage pipes have been fused for many years with the FRIAFIT HDPE sewage system tightly, frictionlocked and root-proof.

Areas of application

House service connections to HDPE sewers: Direct transition option of house service pipings made of PVC/PP by using the integrated plug-in sleeve DN 150. The plug-in sleeve has a SBR lip seal and a large insertion depth for a secure guiding of the pipe.

The FRIAFIT transition saddle ASA-TL/KG facilitates the production of sewage house service connections without having to disconnect the existing HDPE sewer.

Notes on processing

The component part is fixed on the pipe with the **clamping and tapping tool FWFIT** specifically developed for this purpose and is tapped flush and in a time-saving way after having cooled down after fusion.

For the preparation for the fusion of the ASA-TL/KG saddles, please see the FRIAFIT installation and the FWFIT operating instructions.

Good reasons for the FRIAFIT transition saddle ASA-TL/KG

Saddle element

Economic production of house service connections, in particular in case of a high building coverage

Possible applications for new installation, refurbishment, and later connection of drain pipes

Little space required thanks to compact component part, PVC / PP connecting pipes can be directly inserted into the sleeve element

Direct connection of the connecting pipes without interfering displacement or drain obstructions

Combined clamping and tapping tool FWFIT for economic processing

Bar code for fully automatic fusion with HDPE pipes from SDR 33 to SDR 11, taking into consideration the ambient temperature (temperature compensation)

Exposed, fixed heating coil for direct heat transfer to the pipe

Plug-in sleeve element

Safe guiding of the PVC / PP pipe thanks to a large insertion depth

SBR lip seal according to EN 681-1

Standardised material transition