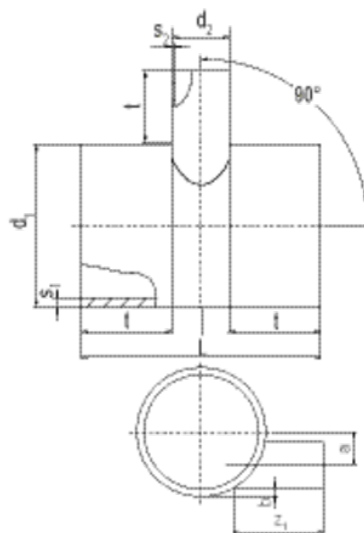


# ATSRS 90

## Έκκεντρο συστολικό ημι-ταφ 90° (spigot εξαρτήματα)

HD-PE fitting with off-center outlet for use with FRIAFIT sewage coupler AM without holding devices. Pipe colour black with bright inner surface (according to availability)



PE 80/PE 100

Maximum testing pressure 0.5 bar in accordance to DIN EN 1610

Κωδικός προϊόντος	product.detail.attribute.d1Small	d <sub>2</sub>	BX	L	t	z <sub>1</sub>	s <sub>1</sub>	s <sub>2</sub>	b	a	Weight kg
682401	315	160	1	565	200	280	17,9	9,1	30	50	12,100
682402	315	225	1	630	200	280	17,9	12,8	25	20	15,300
682403	355	160	1	660	200	290	20,1	9,1	30	68	17,000
682404	355	225	1	730	200	290	20,1	12,8	25	40	20,700
682405	450	160	1	660	200	315	25,5	9,1	30	115	25,600
682406	450	225	1	730	200	315	25,5	12,8	25	87	30,700
682407	560	160	1	660	200	340	31,7	9,1	30	170	39,000
682408	560	225	1	730	200	340	31,7	12,8	25	142	45,300
682409	630	160	1	660	200	360	35,7	9,1	30	205	48,800
682410	630	225	1	730	200	360	35,7	12,8	25	177	56,200