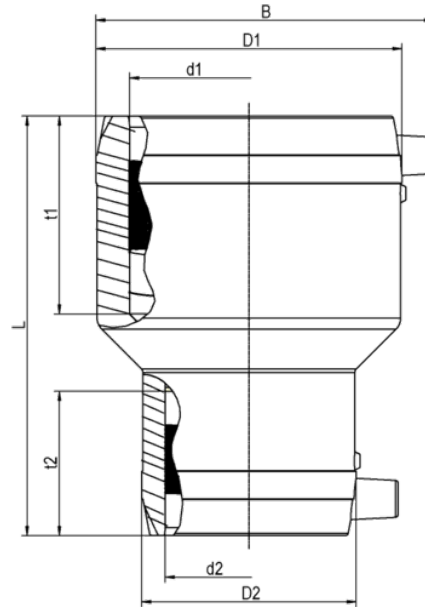


# MR

## Συστολικός ηλεκτροσύνδεσμος

With exposed heating coils for optimal heat transfer, large insertion depth, wide fusion zones plus cold zones at the end and in the middle to prevent the flow of molten material, for use without holding devices.



PE 100 SDR 11

Maximum working pressure 16 bar (water)/10 bar (gas)



Κωδικός προϊόντος	product.detail.attribute.d1Small	d <sub>2</sub>	BX	PU	L	t <sub>1</sub>	t <sub>2</sub>	D <sub>1</sub> D <sub>2</sub>	B	Weight kg
616824	20	16	70	2240	75	36	36	32/28	44	0,035
616452	32	16	80	2560	91	39	34	45/28	62	0,060
615386	32	20	80	2560	88	39	30	45/32	62	0,060
615502	32	25	70	2240	88	39	33	45/38	62	0,070
615387	40	20	60	1920	98	43	30	54/32	70	0,080
616751	40	25	120	1280	101	50	40	54/38	66	0,090
615388	40	32	50	1600	98	43	39	54/45	70	0,090
616752	50	25	130	960	107	52	39	66/38	77	0,120
612070	50	32	32	1024	110	49	39	68/45	82	0,140
612071	50	40	25	800	110	49	43	68/54	82	0,140
615389	63	32	18	576	125	55	44	82/45	96	0,210
615390	63	40	16	512	125	55	43	82/54	96	0,220
612072	63	50	16	512	125	55	48	82/68	96	0,230
616583	75	63	15	270	143	61	55	94/79	110	0,325
615391	90	50	15	270	160	69	49	117/68	129	0,470
615392	90	63	15	270	160	69	55	117/82	129	0,510
616582	90	75	15	270	159	67	63	113/94	127	0,505

MR

## Συστολικός ηλεκτροσύνδεσμος

Κωδικός προϊόντος	product.detail.attribute.d1Small	d <sub>2</sub>	BX	PU	L	t <sub>1</sub>	t <sub>2</sub>	D <sub>1</sub> D <sub>2</sub>	B	Weight kg
615393	110	63	10	180	160	79	55	142/82	152	0,730
615693	110	90	8	144	180	79	69	140/115	152	0,900
615694	125	90	8	144	200	86	69	155/115	166	0,980
616510	125	110	16	128	202	95	70	157/137	172	1,300
615695	160	110	8	64	230	98	79	201/140	207	1,990
616511	180	125	1	60	275	108	74	214/155	230	2,600
616356	225	160	1	36	270	110	98	282/203	283	4,860

FRIALEN safety fittings can be fused to pipes SDR11 - SDR17.6 with exception of the dimensions d 125/110 and d 180/125. These dimensions can be fused to pipes SDR9 - SDR26. Minimum wall thickness  $s_{min} \geq 3$  mm. Other SDR-stages on request. Please observe the marking directly at the product, which is mandatory. DVGW-Registration Nos. DV-8601AU2248 and DV-8606AU2249

## MR

# Συστολικός ηλεκτροσύνδεσμος

### Areas of Application

The FRIALEN Electrofusion Reducer MR is applied for immediate pipe reduction within the pipe system.

### Assembly Instructions

Fusing of pipe ends with the FRIALEN Electrofusion Reducers MR takes place by FRIALEN fusion – leakproof and longitudinally strong.

The pipe ends are prepared according to the general installation instructions (note “Assembly Instructions” for FRIALEN Safety Fittings for house connections and distribution pipes (remove oxide layer/clean).

### Good reasons for using the FRIALEN Electrofusion Reducers MR:

Large coupler depth for ease of pipe guiding (no holding clamps required)

Extra wide fusion zones

Maximum stability through great wall thickness

Cold zones at the front side and in the middle of the coupler

Exposed heating coil for direct heat transmission to the pipe

Small annular gap for build-up of optimum joining pressure in the fusion zone

Touch proof electric contacts

Fusion indicator for visual fusion control

Durable batch marking

Individually wrapped for dirt protection

Additional barcode for tracing back the underground fitting (Traceability-Coding)