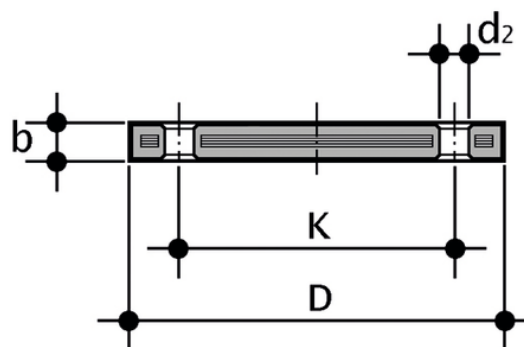


OABC

Steel core blind flange, PP/FRP coated, according to ANSI B16.5 cl.150



Κωδικός προϊόντος	tooltiimage	inch	DN	MPA (bar)	B	D	d2 mm	d[5:2] inch	Kmm	Kinch	** (Nm)	n	g
OABC012	-	1/2"	15	16	12	95	16	5/8"	60,45	2 3/8"	15	4	200
OABC034	-	3/4"	20	16	12	102	16	5/8"	69,85	2 3/4"	15	4	240
OABC100	-	1"	25	16	16	114	16	5/8"	79,25	3 1/8"	15	4	370
OABC114	-	1 1/4"	32	16	16	130	16	5/8"	88,90	3 1/2"	25	4	530
OABC112	-	1 1/2"	40	16	18	133	16	5/8"	98,55	3 7/8"	35	4	560
OABC200	-	2"	50	16	18	162	20	3/4"	120,65	4 3/4"	35	4	810
OABC212	-	2 1/2"	65	16	18	184	20	3/4"	139,70	5 1/2"	40	4	1070
OABC300	-	3"	80	16	18	194	20	3/4"	152,40	6"	40	4	1030
OABC400	-	4"	100	16	18	229	20	3/4"	190,50	7 1/2"	40	8	1570