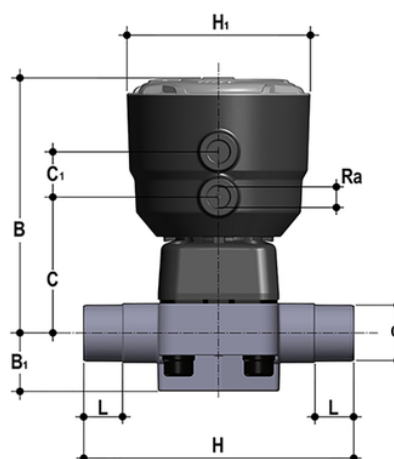


DKBDM/CP NC – pneumatically actuated 2-way diaphragm valve PN6 for basic applications DN 15:65

Pneumatically actuated diaphragm valve with male ends for socket welding, metric series Normally Closed function.



Κωδικός προϊόντος	tooltplimage
DKBDMNC020E	-
DKBDMNC025E	-
DKBDMNC032E	-
DKBDMNC040E	-
DKBDMNC050E	-
DKBDMNC063E	-
DKBDMNC075E	-