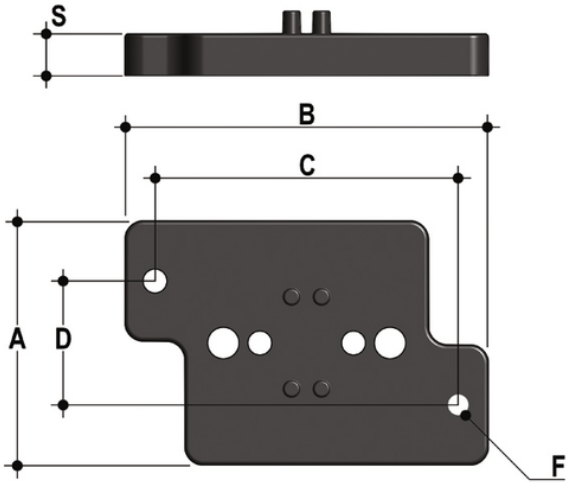


PMDK

Wall mounting plate



Κωδικός προϊόντος	tooltipImage	d	DN	A	B	C	D	F	S	to be used with:
PMDK1	-	32	25	65	97	81	33	5,5	11	DK - DKL - DKB - DKD
PMDK2	-	75	65	65	144	130	33	6,5	11	DK - DKL - DKB - DKD

PMDK

- Upper part (PVC-U)
 - Bottom part (PVC-U)
 - Bolts (zinc plated steel)
 - Nuts (zinc plated steel)
 - Gasket (NBR)
 - Reinforcing ring (Stainless steel)
- The reinforcing bush are used to reinforce the pipe PE100 (SDR11) e PE-X, to elong the lifetime of the pipeline and to reduce the collapse risk of the pipe in disadvantages conditions. They use is particularly suggested using PE-X pipes. The two tightening keys (d.16-63 and d.75-110) are important tools to install the **MAGNUM 3G** fittings