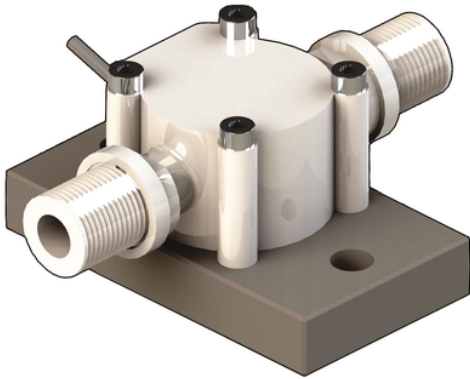


ULFOX.X.X

Ultra Low Flow Sensors



Κωδικός Προϊόντος	tooltiplmage	Version	Power supply	Lenght	Main Wetted Materials	Enclosure	Flow Rate Range	Weight (gr.)
ULF01.H.0	-	Hall	5 - 24 VCC	77 mm	POM \$ FKM	IP65	From 1,5 to 100 l/h*	170
ULF01.H.2	-	Hall	5 - 24 VCC	77 mm	ECTFE \$ FKM	IP65	From 1,5 to 100 l/h*	200
ULF01.H.3	-	Hall	5 - 24 VCC	77 mm	ECTFE \$ KALREZ	IP65	From 1,5 to 100 l/h*	200
ULF01.R.0	-	Reed	None	77 mm	POM \$ FKM	IP65	From 1,5 to 100 l/h*	170
ULF01.R.2	-	Reed	None	77 mm	ECTFE \$ FKM	IP65	From 1,5 to 100 l/h*	200
ULF01.R.3	-	Reed	None	77 mm	ECTFE \$ KALREZ	IP65	From 1,5 to 100 l/h*	200
ULF03.H.0	-	Hall	5 - 24 VCC	77 mm	POM \$ FKM	IP65	From 1,5 to 100 l/h*	170
ULF03.H.2	-	Hall	5 - 24 VCC	77 mm	ECTFE \$ FKM	IP65	From 1,5 to 100 l/h*	200
ULF03.H.3	-	Hall	5 - 24 VCC	77 mm	ECTFE \$ KALREZ	IP65	From 1,5 to 100 l/h*	200
ULF03.R.0	-	Reed	None	77 mm	POM \$ FKM	IP65	From 1,5 to 100 l/h*	170
ULF03.R.2	-	Reed	None	77 mm	ECTFE \$ FKM	IP65	From 1,5 to 100 l/h*	200
ULF03.R.3	-	Reed	None	77 mm	ECTFE \$ KALREZ	IP65	From 1,5 to 100 l/h*	200



ULFOX.X.X

- APPLICATIONS β' Water treatment β' Chemical industry β' Pharmaceutical industry β' Dosing systems β' Laboratory plants MAIN FEATURES β' POM or ECTFE (HalarB) wetted parts β' Two flow ranges available: - 1.5 - 100 l/h (0.0066 - 0.44 gpm) - 6 - 250 l/h (0.0264 - 1.1 gpm) β' High chemical resistance β' Easy mounting