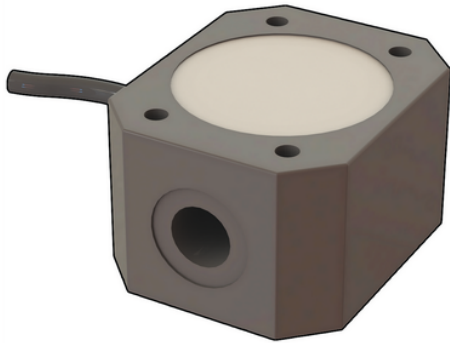


F3.8X.H.XX

Oval Gear Flow Sensors



Κωδικός προϊόντος	tooltiplmage	Version	Power supply	Lenght	Main Wetted Materials	Enclosure	Flow Rate Range	Weight (gr.)
F3.81.H.01	-	Hall	5 - 24 VCC	54 mm	PP \$ ECTFE \$ FKM	IP65	From 10 to 100 l/h*	200
F3.81.H.02	-	Hall	5 - 24 VCC	54 mm	ECTFE \$ ECTFE \$ FKM	IP65	From 10 to 100 l/h*	300
F3.81.H.03	-	Hall	5 - 24 VCC	54 mm	316L SS \$ FKM	IP65	From 10 to 100 l/h*	800
F3.82.H.01	-	Hall	5 - 24 VCC	54 mm	PP \$ ECTFE \$ FKM	IP65	From 10 to 100 l/h*	200
F3.82.H.02	-	Hall	5 - 24 VCC	54 mm	ECTFE \$ ECTFE \$ FKM	IP65	From 10 to 100 l/h*	300
F3.82.H.03	-	Hall	5 - 24 VCC	54 mm	316L SS \$ FKM	IP65	From 10 to 100 l/h*	800



F3.8X.H.XX

- APPLICATIONS β' Chemical industry β' Laboratory plants β' Dosing systems β' Pulsating flows measurement β' High viscosity and not conductive fluid measurement β' Oil measurement MAIN FEATURES β' Compact dimensions β' Easy installation β' High chemical resistance β' High viscosity fluids measurement β' Low pressure loss