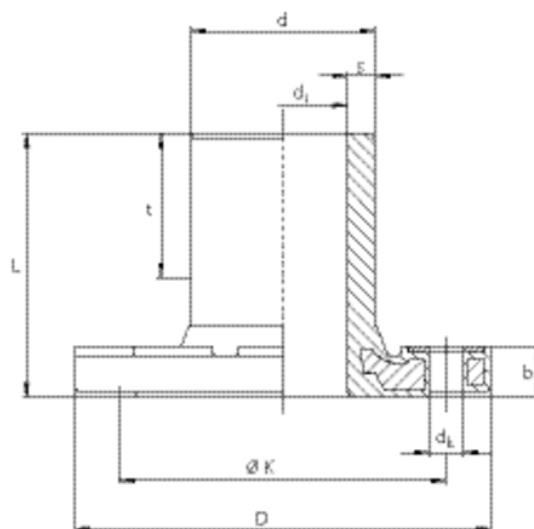


**EFL**

## Φλάντζες συγκόλλησης (εξαρτήματα υποδοχής)

Flange Adaptor and flange as a factory made flange piece. Metal insert in the flange to prevent creep. Spigot end for use with FRIALEN couplers MB or UB. Steel-reinforced elastomeric gaskets recommended. Please observe the bolting torques of the gasket manufacturer.

Additional washers are necessary.



PE 100 SDR 11

Maximum working pressure 16 bar (water)/10 bar (gas)



	Κωδικός προϊόντος	d	BX	PU	D	L	t	dk	di	s	b	Weight kg
	615417	63	5	250	169	105	53	17	51	5,8	23	1,510
	615418	90	5	160	204	130	71	17	72	8,2	25	2,550
	615419	110	3	96	224	150	83	17	87	10	27	3,310
	615605	125	2	64	224	160	85	17	101	11,4	30	3,280
	615421	160	2	36	288	190	120	21	127	14,6	29	5,950
	615927	180	2	36	288	200	120	21	123	16,4	31	6,660
<sup>1</sup>	615607	225	1	27	343	225	120	21	180	20,4	31	9,150

<sup>1</sup> Flange bore for PN 10

## EFL

### Φλάντζες συγκόλλησης (εξαρτήματα υποδοχής)

#### Areas of Application

The FRIALEN Full Faced Flange EFL is used for the connection between HD-PE and another material or valve up to PN 16. EFL d 63-180 bolt circle for PN 10 and PN 16. EFL d 225/DN 200 is available only with a PN 10 bolt circle.

#### Assembly Instructions

The Full Faced Flange is installed without pressure. Please refer to the FRIALEN Assembly Instructions regarding preparations for FRIALEN fusion on the flange adaptor (marking insertion depth, removing oxide skin, cleaning etc.).

DIN EN 1092-1 applies to bolt circle diameter, measurements and number of bolts.

All commercial profile and flat gaskets can be used. Please observe the bolt torque specifications by the gasket manufacturer. We recommend profile gaskets type G-St.

#### Good reasons for the FRIALEN-Full Faced Flanges EFL:

Flange adaptor and flange are one construction component and make a homogeneous unit

The cold flowing properties well known with HD-PE are avoided through this constructive configuration

Solid construction. Integration of the flange prevents tear-off