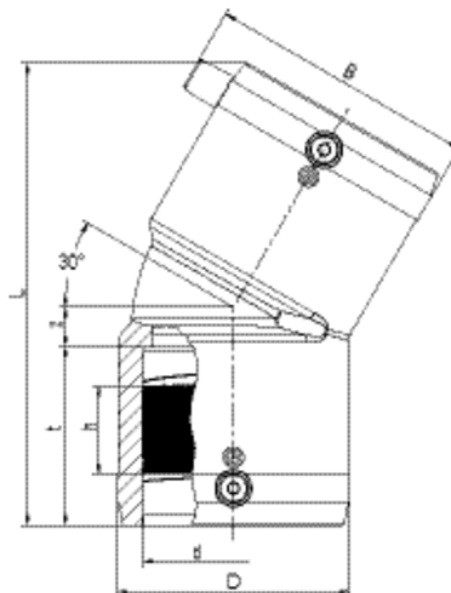


W30 SDR 11

Γωνία ηλεκτροσυγκολλησης 30°

With exposed heating coils for optimal heat transfer, large insertion depth, wide fusion zones plus cold zones at the end and in the middle to prevent the flow of molten material, for use without holding devices.



PE 100 SDR 11

Maximum working pressure 16 bar (water)/10 bar (gas)



Κωδικός προϊόντος	d	BX	PU	D	L	t	z	h	B	Weight kg
615272	90	8	144	115	224	72	24	43	123	0,780
615273	110	6	108	142	252	83	27	47	157	1,260
615274	125	4	72	158	270	85	30	51	162	1,640
615340	160	5	40	199	350	96	40	59	198	3,870
616261	180	3	24	229	390	101	79	57	234	4,990
616262	200	1	18	254	412	106	84	54	256	6,350
616263	225	1	18	281	456	123	86	64	282	8,220

FRIALEN Safety Fittings can be fused to pipes of SDR stages 11 to 17.6. Other SDR-stages on request. Please observe the marking directly at the product, which is mandatory. DVGW-Registration No. DV-8606AU2249

W30 SDR 11

Γωνία ηλεκτροσυγκολλησης 30°

Areas of Application

The FRIALEN-Elbow W30° is used for all changes of direction in HD-PE pipes.

Assembly Instructions

The fusion of the pipe ends with the FRIALEN Elbows W30° takes place by FRIALEN-fusing – leakproof and longitudinally strong.

The pipe ends are prepared according to the general installation instructions (see "Assembly Instructions" for "FRIALEN Safety Fittings for house connections and distribution pipes up to d 225"). This involves removing the oxide skin and cleaning the pipe ends.

Good reasons for using the FRIALEN Elbows W30°:

Large coupler depth for ease of pipe guiding (no holding clamps required)

Extra wide fusion zones

Maximum stability through great wall thickness

Cold zones at the front side and in the middle of the coupler

Exposed heating coil for direct heat transmission to the pipe

Small annular gap for build-up of optimum joining pressure in the fusion zone

Contacts safe to touch

Fusion indicator for visual fusion control

Durable batch marking

Individually wrapped for dirt protection

Additional barcode for tracing back the fitting (Traceability-Coding)