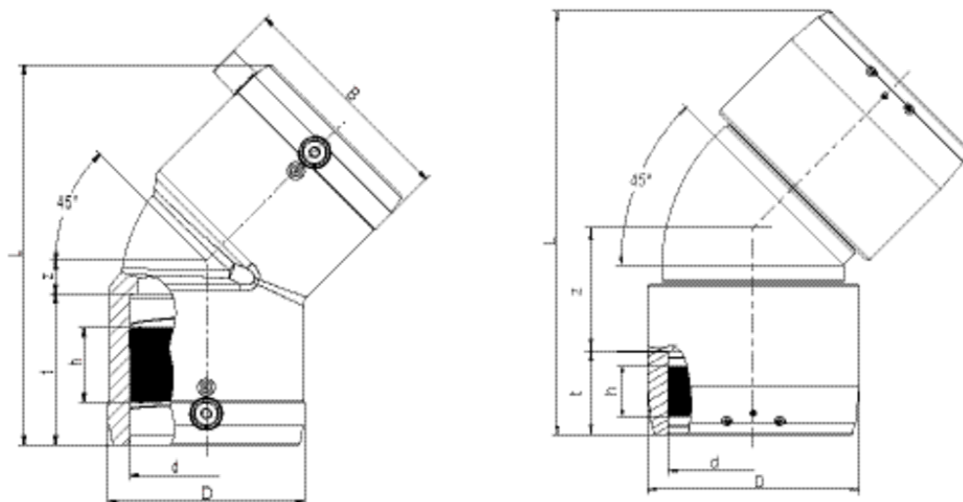


W45 SDR 11

Γωνία ηλεκτροσυγκολλησης 45°

With exposed heating coils for optimal heat transfer, large insertion depth, wide fusion zones plus cold zones at the end and in the middle to prevent the flow of molten material, for use without holding devices.



PE 100 SDR 11

Maximum working pressure 16 bar (water)/10 bar (gas)



Κωδικός προϊόντος	d	BX	PU	D	L	t	z	h	B	Weight kg
616687	25	150	2400	35	89	38	7	17	48	0,050
612092	32	50	1600	43	102	44	8	21	60	0,070
612094	40	30	960	54	120	49	11	29	70	0,120
612096	50	20	640	66	136	54	13	32	80	0,180
612098	63	10	320	82	158	62	14	34	95	0,290
612100	75	14	252	96	198	70	29	38	111	0,520
612102	90	8	144	115	232	79	35	45	128	0,810
612104	110	10	80	138	265	85	41	50	150	1,320
612106	125	10	80	157	279	87	46	44	167	1,800
615275	160	4	32	207	377	92	88	44	210	4,280
615687	180	3	24	228	382	97	83	65	229	4,600
616264	200	1	18	254	415	106	87	54	256	6,590
615688	225	1	8	280	450	112	98	66	281	8,300
616404	250	1	6	310	621	128	176	80	-	17,300
616405	280	1	4	350	702	139	205	84	-	25,600
616406	315	1	2	396	755	150	215	80	-	35,270

FRIALEN safety fittings can be fused to pipes SDR11 - SDR 17.6. Minimum wall thickness $s_{min} \geq 3$ mm. Other SDR-stages on request. Please observe the marking directly at the product, which is mandatory. DVGW-Registration Nos. DV-8601AU2248 and DV-8606AU2249

W45 SDR 11

Γωνία ηλεκτροσυγκολλησης 45°

Areas of Application

The FRIALEN-Elbow W45° is used for all changes of direction in HD-PE pipes.

Assembly Instructions

The fusion of the pipe ends with the FRIALEN-Elbows W45° takes place by FRIALEN-fusing – leakproof and longitudinally strong.

The pipe ends are prepared according to the general installation instructions (see Assembly Instructions for FRIALEN-Safety Fittings for house connections and distribution pipes up to d 225). This involves removing the oxide skin and cleaning the pipe ends.

Good reasons for using the FRIALEN-Elbows W45°:

Large coupler depth for ease of pipe guiding (no holding clamps required)

Extra wide fusion zones

Maximum stability through great wall thickness

Cold zones at the front side and in the middle of the coupler

Exposed heating coil for direct heat transmission to the pipe

Small annular gap for build-up of optimum joining pressure in the fusion zone

Contacts safe to touch

Fusion indicator for visual fusion control

Durable batch marking

Individually wrapped for dirt protection

Additional barcode for tracing back the fitting (Traceability-Coding)