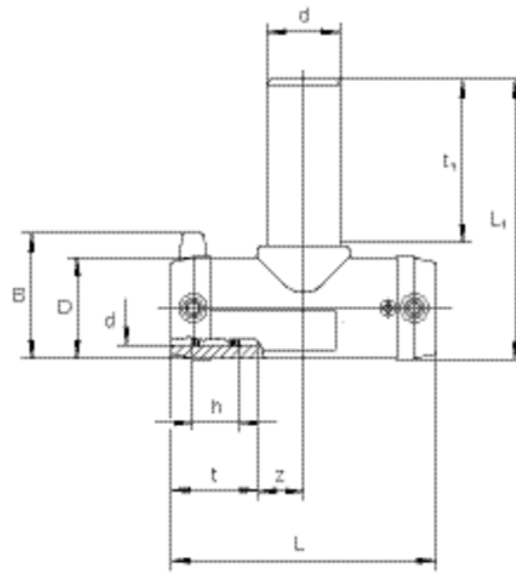


TA SDR 11

Ταφ με ευθύ άκρο εξόδου μεγάλου μήκους

Straight connector with exposed heating coils for optimal heat transfer, large insertion depth, wide fusion zones plus cold zones at the end and in the middle to prevent the flow of molten material, for use without holding devices. Up to and including d63 extra long outlet spigot dimensioned for 2 fusion operations.



Κωδικός Προϊόντος	d	BX	PU	D	L	L1	t	t ₁	z	h	B	Weight kg
616685	20/20	200	3200	29	77	95	31	45	8	17	42	0,040
616338	25/25	50	900	36	108	110	41	66	13	19	54	0,080
615719	32/32	35	630	44	116	131	39	80	19	22	61	0,120
615720	40/40	20	360	53	146	151	43	88	30	25	70	0,210
615721	50/50	10	180	67	175	186	49	110	38	29	80	0,360
615722	63/63	10	180	81	197	203	56	125	42	33	94	0,530

FRIALEN safety fittings can be fused to pipes SDR11 - SDR 17.6. Minimum wall thickness $s_{min} \geq 3$ mm. Other SDR-stages on request. Please observe the marking directly at the product, which is mandatory. DVGW-Registration No.: DV-8601AU2248 and DV-8606AU2249.



Κωδικός Προϊόντος	d	BX	PU	D	L	L1	t	t ₁	z	h	B	Weight kg
616677	90/90	12	96	116	280	219	79	79	61	43	126	1,250
616680	110/110	6	48	141	310	247	82	82	73	48	148	1,950

TA SDR 11

Ταφ με ευθύ άκρο εξόδου μεγάλου μήκους

Κωδικός προϊόντος	d	BX	PU	D	L	L1	t	t ₁	z	h	B	Weight kg
616684	160/160	3	24	203	390	326	98	98	97	45	205	4,950
617175	180/180	2	16	223	495	389	105	87	143	49,9	228	8,120
617179	200/200	1	8	247	540	425	112	112	158	50,3	250	10,720
617183	225/225	1	8	278	590	469	120	120	175	61,2	281	15,050

FRIALEN safety fittings can be fused to pipes SDR11 - SDR 17.6. Minimum wall thickness $s_{min} \geq 3$ mm. Other SDR-stages on request. Please observe the marking directly at the product, which is mandatory. DVGW-Registration No.: DV-8601AU2248 and DV-8606AU2249.

TA SDR 11

Ταφ με ευθύ άκρο εξόδου μεγάλου μήκους

Areas of Application

The FRIALEN-T pieces TA are used for pipe outlets of HD-PE pipelines.

Assembly Instructions

The fusion of the pipe ends with the FRIALEN-TA takes place by FRIALEN-fusing – leakproof and longitudinally strong.

The pipe ends are prepared (removing the oxide layer/cleaning) according to the general installation instructions (see "Assembly Instructions" for "FRIALEN-Safety Fittings for house connections and distribution pipes up to d 225").

Good reasons for using the FRIALEN-TA:

Large coupler depth for ease of pipe guiding (no holding clamps required)

At dim. up to d 63, Length of outlet spigot dimensioned for two fusion operations

Extra wide fusion zones

Maximum stability through great wall thickness

Cold zones at the front side and in the middle of the coupler

Exposed heating coil for direct heat transmission to the pipe

Small annular gap for build-up of optimum joining pressure in the fusion zone

Touch proof electric contacts

Durable batch marking

Individually wrapped for dirt protection

Additional barcode for tracing back the fitting (Traceability-Coding)