

SA TL

Spigot Σέλες Top-Loading

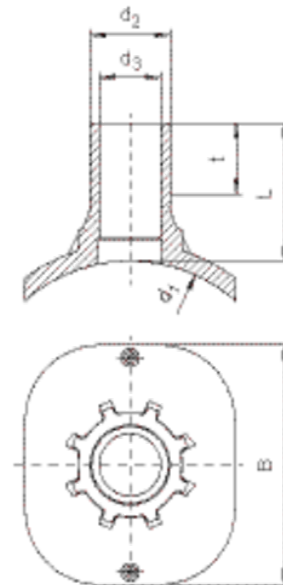
Suitable for all pipe diameters in the given range by means of the FRIATOP Clamping Unit (see application picture and Product Range FRIATOOLS Ref.-Nr. 613350).

Compact fitting in HD-PE. Saddle with exposed heating element for optimal heat transfer and outlet spigot for use with FRIALEN couplers MB or UB.

Swarfless tapping in the depressurised state by means of commercial drilling units (we recommend Hütz & Baumgarten (www.huetz-baumgarten.de)).

d_3 = maximum tapping diameter in mm

For tapping under pressure, please contact our hotline: +49 621 486-2325.



PE 100 SDR 11

Maximum working pressure 16 bar (water)/10 bar (gas)



Κωδικός προϊόντος	product.detail.attribute.d1Small	d_2	BX	PU	d_3	L	t	B	Drilling $\varnothing d_a$	Weight kg
615465	250-560	32	5	90	21	109	42	200	20	0,600
615466	250-560	63	5	90	47	109	56	200	46	0,690

1) Drilling diam. max. 60 mm

2) We recommend the tapping equipment of Hütz + Baumgarten

FRIALEN-spigot saddles $\leq d 63$ can be fused to pipes of SDR stage 11 and $> d 63$ to pipes of SDR stages 11 to 17.6. Other SDR-stages on request. Please observe the marking directly at the product, which is mandatory. DVGW-Registration-No.: DV-8606AU2249 and DV-8611AU2250

SA TL

Spigot Σέλες Top-Loading

Areas of Application

The FRIALEN-Spigot Saddles SA TL are used for tapping in the depressurised state of gas and water pipes as well as for pressure drainage. Outlet spigot for use with FRIALEN-couplers MB or UB.

SA TL can be used for pipes in the depressurised state as a T-piece with reduced outlet.

Assembly Instructions

The saddle is clamped onto the pipe with the FRIATOP clamping device (see pricelist "Technical Equipment"). Please read the "Assembly and Operating Instructions for FRIATOP clamping unit (Top-Loading)".

The fusion of the HD-PE distribution pipes and the house connections with FRIALEN-Spigot Saddles SA TL takes place by FRIALEN-fusing – leakproof and longitudinally strong.

The saddle and the outlet spigot have to be prepared according to the general installation instructions (see "Assembly Instructions" for "FRIALEN-Special Technology for laying large bore pipes and relining pipe networks $\geq d 250$ "). This involves removing the oxide layer and cleaning the pipe covered by the saddle.

Swarfless tapping up to $\varnothing 46$ mm, at $\varnothing 60$ mm extremely swarf-reduced.

For tapping pressurized pipes a shut off equipment can be used or tapping with the tapping device can be done via a combination of shut off device/KHP-Ball Valve/EFL-Full Faced Flange or shut off device/AQUAFast-Flange.*

* (see brochure FRIALEN spigot saddles SA and SA TL: Drilling of HD-PE pipes – pressure free or under operating pressure)

Good reasons for using the FRIALEN-Spigot Saddles SA TL:

Compact construction

Exposed heating element for optimal heat transfer

Swarfless tapping by tapping equipment of Hütz + Baumgarten

Leakage free tapping possible by means of a shut off element

Extra wide fusion zone

The SA-TL can be applied universally to large HD-PE pipe diameters $d 250-560$. This means additional economy due to less material needed and less stock both with suppliers and trade

Additional barcode for tracing back the underground fitting (Traceability-Coding)