

# RS TL

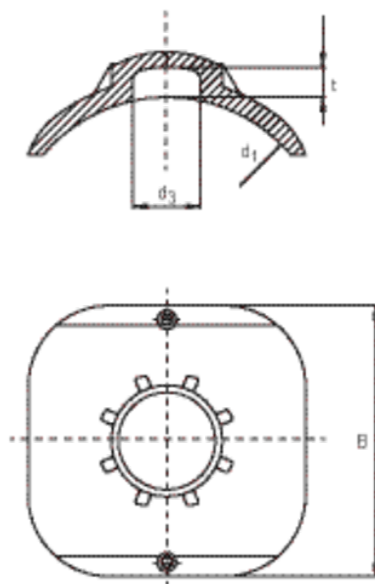
## Σέλα επιδιόρθωσης Top-Loading

Suitable for all pipe diameters in the given range by means of the FRIATOP Clamping Unit (see application picture and Product Range FRIATOOLS Ref.-No. 613350).

HD-PE saddle for the repair of minor pipe damage with or without escape of fluid.

In order to avoid discharge of media the leak has to be sealed with a separate plug\* (<  $d_3$ ). With exposed heating element for optimal heat transfer.

\*The plug is not included in the scope of delivery.



PE 100 SDR 11

Maximum working pressure 16 bar (water)/10 bar (gas)



Κωδικός Προϊόντος	product.detail.attribute.d1Small	BX	PU	$d_3$	t	B	Weight kg
615397	250-560	10	180	50	20	200	0,570

FRIALEN-Safety Fittings can be fused to pipes of SDR stages 11 to 17.6. Other SDR-stages on request. Please observe the marking directly at the product, which is mandatory. DVGW-Registration No.: DV-8611AU2250

## RS TL

### Σέλα επιδιόρθωσης Top-Loading

#### Areas of Application

The FRIALEN-Repair Saddle Top-Loading VSC-TL is used for the repair of minor pipe damages **with and without** discharge of media.

#### Assembly Instructions

The saddle is suitable for all pipe diameters in the given range. It is clamped onto the pipe by means of the FRIATOP clamping unit (see product range "Technical Equipment"). Please read the "Assembly and Operating Instructions for FRIATOP Clamping Unit (Top-Loading)".

The fusion of the HD-PE distribution pipes with the FRIALEN-Repair Saddle takes place by FRIALEN-fusing – leakproof and longitudinally strong.

In order to avoid discharge of media, the leak has to be sealed with a separate plug ( $\leq d_3$ ).

The pipe and the saddle have to be prepared according to the general installation instructions (see "Assembly Instructions" for "FRIALEN-Special Technology for laying large bore pipes and relining pipe networks  $\geq d 250$ "). This involves removing the oxide layer and cleaning the pipe covered by the saddle.

#### Good reasons for using the FRIALEN-VSC-TL:

Compact construction

HD-PE saddle with exposed heating element for optimal heat transfer

Sealing area free of heating wires

Extra wide fusion zone

The VSC-TL can be applied universally to large HD-PE pipe diameters  $d 250-560$ . This means additional economy since less material is needed and less stock at both suppliers and trade is necessary.

Additional barcode for tracing back the fitting (Traceability-Coding)