

# SPA TL

## Balloon Shut off Saddles Top-Loading

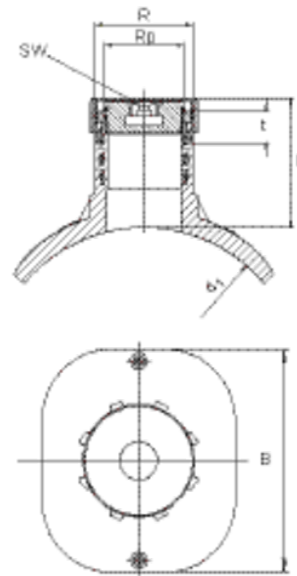
Suitable for all pipe diameters in the given range by means of the FRIATOP Clamping Unit (see application picture and Product Range FRIATOOLS Ref.-No. 613350).

Compact saddle fitting suitable for available balloon shut-off equipment. HD-PE saddle with exposed heating element for optimal heat transfer. Brass guide thread permanently anchored in the HD-PE. Cannot be released or rotated. Includes brass plugs with square recess. Protection against access to the stack by fusing on a FRIALEN SPAK.

Dimension range d 250 – d 560 fusible as standard using the top-loading method. Please note the maximum permissible wall thickness for tapping in the dimension range > d 315 - d 560.

If required, please contact the manufacturer of the tapping equipment.

Please note manufacturer's instructions.



PE 100 SDR 11

Maximum working pressure 16 bar (water)/10 bar (gas)



Κωδικός Προϊόντος	product.detail.attribute.d1Small	Rp	BX	PU	R	L	t	B	SW	Drilling Ø d <sub>a</sub>	Weight kg
615395	250-355 (560)	2"	18	144	2 1/2"	115	24	200	19	56,5	1,360

FRIALEN-Safety Fittings can be fused to pipes of SDR stages 11 to 17.6. Other SDR-stages on request. Please observe the marking directly at the product, which is mandatory. DVGW-Registration No.: DV-8611AU2250

1) d<sub>1</sub> up to d 560. Please refer to the instructions of the manufacturer of the balloon.

# SPA TL

## Balloon Shut off Saddles Top-Loading

### Areas of Application

FRIALEN-Shut off Saddle SPA-TL is suitable for normal commercial shut off equipment.

### Assembly Instructions

The saddle is clamped onto the pipe with the FRIATOP clamping device (see pricelist "Technical Equipment"). Please read the "Assembly and Operating Instructions for FRIATOP clamping unit (Top-Loading)".

The fusion of the HD-PE mains and the FRIALEN-Shut off Saddle Top-Loading takes place by FRIALEN-fusing – leakproof and longitudinally strong.

The pipe and the saddle have to be prepared according to the general installation instructions (see Assembly Instructions for "FRIALEN-Large Pipe Technique for laying large pipes and relining pipe networks"). This involves removing the oxide skin and cleaning the pipe covered by the saddle.

### Good reasons for using the FRIALEN-Shut off Saddle SPA-TL:

Compact construction

HD-PE saddle with exposed heating element for optimal heat transfer

Compact part suitable for normal commercial shut off equipment for tapping through the saddle

Brass-guide thread permanently and immovable anchored in the HD-PE

Includes brass plug with square recess

Protection against access to the dome by fusing on a FRIALEN SPAK

The SPA-TL can be applied universally to large HD-PE pipe diameters d 250-315 (560). This means additional economy due to less material needed and less stock both with suppliers and trade

Additional barcode for tracing back the underground fitting (Traceability-Coding).