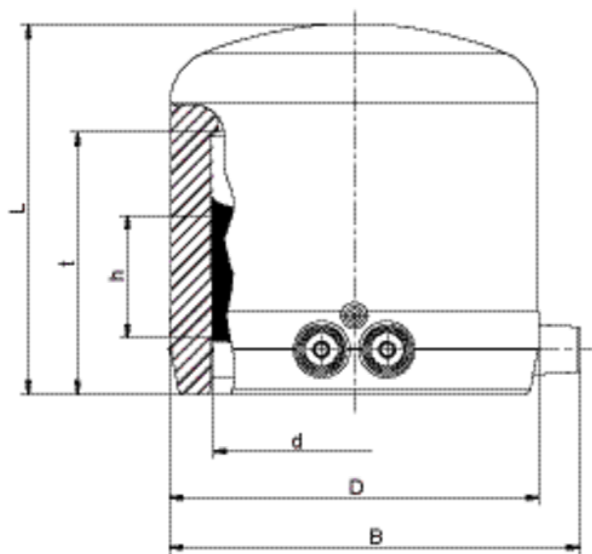


SPAK

Cap for Balloon Shut off Saddles

With exposed heating coil for optimal heat transfer, large insertion depth, extra wide fusion zone plus cold zones at the end to prevent the flow of molten material.

When using hydrogen, it is mandatory to use the cap SPAK with the Balloon Shut off Saddles SPA.



PE 100 SDR 11

Maximum working pressure 16 bar (water)/10 bar (gas)



Κωδικός προϊόντος	d	BX	PU	D	L	t	h	B	Weight kg
612311	75	20	640	99	99	70	31	110	0,280

FRIALEN-Safety Fittings can be fused to pipes of SDR stages 11 to 17.6. Other SDR-stages on request. Please observe the marking directly at the product, which is mandatory. DVGW-Registration No.: DV-8606AU2249

SPAK

Cap for Balloon Shut off Saddles

Areas of Application

FRIALEN-Cap SPAK is used for final sealing of the drill socket (dome) of a Shut off Saddle SPA \geq d 90 or SPA-TL. Also suitable as End Cap MV for d 75.

Assembly Instructions

The fusion of the Dome of a FRIALEN-Shut off Saddle with the FRIALEN-Cap SPAK takes place by FRIALEN-fusing – leakproof and longitudinally strong.

The dome has to be prepared according to the general installation instructions (see “Assembly Instructions” for “FRIALEN-Safety Fittings for house connections and distribution pipes up to d225”). This involves removing the oxide skin and cleaning the pipe ends.

Good reasons for using the FRIALEN-Cap for Shut off Saddle SPAK:

- Large insertion depth for ease of pipe guiding
- Extra wide fusion zones
- Maximum stability through great wall thickness
- Cold zones at the end to prevent the flow of molten material
- Exposed heating coils for optimal heat transfer to the pipe
- Small annular gap for build-up of optimum joining pressure in the fusion zone
- Contacts safe to touch
- Fusion indicator for visual fusion control
- Durable batch marking
- Individually wrapped for dirt protection
- Additional barcode for tracing back the fitting (Traceability-Coding)