

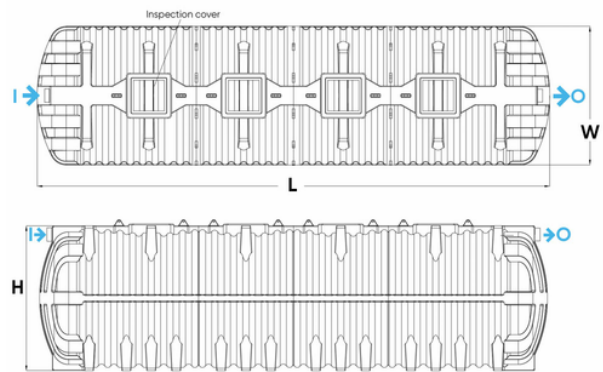
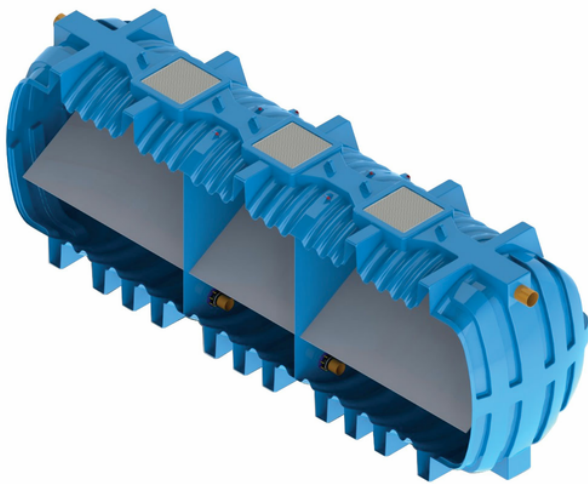
# BIO TOP MAXI, IMHOFF tank

What differentiates Imhoff tanks from septic tanks is the presence of two clearly separate processes of settling and digestion of the sludge. Imhoff Bio Top Maxi tanks are made by polyethylene with ribbed structure.

Bio Top Maxi tank is featured with 2 compartments (settling chamber and a sludge digestion chamber), forming a one piece construction.

Treatment performance:

- DBOS reduction = 40%
- MLSS reduction = 60%
- COMPLIANCE WITH STANDARD 91/27/CE



Reference	tootiplmage	Height H (cm)	L (cm)	Manhole Covers 500x500 (mm)	Item	Users (E.I.)
IS00700	-	H= 228 / W= 214	494	2	BIO MAXI 16000	80
IS00701	-	H= 228 / W= 214	646	3	BIO MAXI 21000	100
IS00702	-	H= 228 / W= 214	798	4	BIO MAXI 26000	130
IS00703	-	H= 228 / W= 214	950	5	TANK 21000 M	150
IS00704	-	H= 228 / W= 214	1102	6	BIO MAXI 36000	180
IS00705	-	H= 228 / W= 214	1254	7	BIO MAXI 41000	200