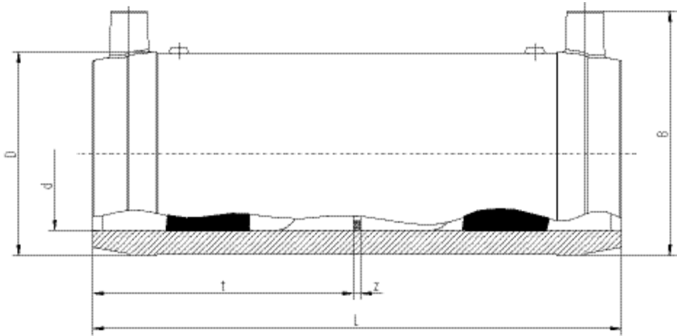


# FRIALONG SDR 11

## Long coupler with easily removable inner stop, SDR 11

Long coupler FRIALONG SDR 11 with inner stop

- Gas, water and H<sub>2</sub>
- Working pressure: MOP (gas) 10 bar, PFA (water) 16 bar
- Material: PE 100
- Easily removable inner stop
- Optimum pipe routing
- Tension-free fusing
- Safety technology
- Large insertion depth for good pipe routing (no holding devices required)
- DVGW test mark: DV-8601AU2248



PE 100 SDR 11

Maximum permissible working pressure 16 bar (water) / 10 bar (gas)



Reference	d	BX	PU	D	L	t	B	Z	Weight kg
615736	32	40	1280	45	136	67	62	2	0,110
615737	40	30	960	54	146	72	72	2	0,150
615608	50	16	512	68	175	86	86	2	0,250
615738	63	10	320	82	197	97	97	2	0,370

FRIALON safety fittings can be fused with pipes with SDR levels 11 to 17.6.

Other SDR levels available on request. Please note the mandatory labels directly on the product. DVGW test marks issued: DV-8601AU2248.

# FRIALONG SDR 11

## Long coupler with easily removable inner stop, SDR 11

### Areas of Application

The FRIALEN Long Coupler FRIALONG is the ideal connection coupler when installing pipes as coiled pipes for domestic connections from d 32 to d 63. This occurs when coiled pipes and

weld-on ends of valves or house entries are joined together, and especially when both pipe ends come from coiled pipes.

### Assembly Instructions

The fusion of pipe ends with the FRIALEN long coupler FRIALONG takes place using FRIALEN fusing – leakproof and longitudinally strong.

The pipe ends are prepared according to the general installation instructions (see "Assembly Instructions" for FRIALEN Safety Fittings for house connections and distribution pipes (Remove oxide skin/clean). It is important to make sure that the outlet spigots of valves and fittings are at least half as long as the coupler.

### Good reasons for using the FRIALEN Long Coupler FRIALONG:

- Increased installation safety when using coiled pipe in domestic connections
- Up to 80% longer than standard FRIALEN Couplers
- Extremely long guiding and retaining zones for taking up coiled pipe
- An alignment function for curved pipe ends is achieved by an extra large insertion depth within the coupler which includes long cold zones
- Exposed heating coil and exceptionally wide fusion zones ensure optimum heat transmission
- No additional tools (holding clamp) required
- All this means fewer and easier steps with increased safety during processing
- Center stop easily removable
- Additional barcode for tracing back the underground fitting (Traceability-Coding)