

# KM SDR 17

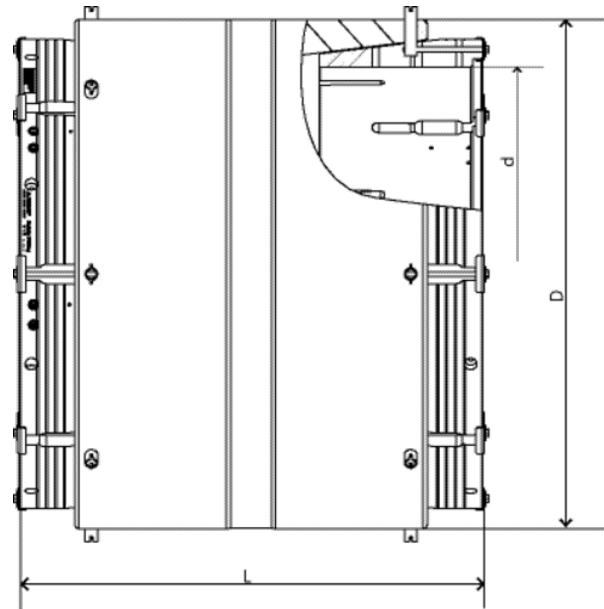
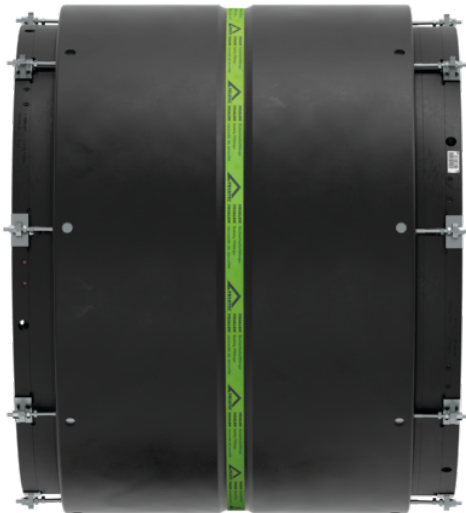
## Conical ring coupler, SDR 17

Conical ring coupler KM SDR 17

- Gas and water
- Working pressure: MOP (gas) 5 bar, PFA (water) 10 bar
- Material: PE 100
- Combination of coupler and clamping coupler
- Problem solver (pipe ovality and different diameters)
- Safety technology
- Separate fusion zone

**Note:**

Only one FRIAMAT XL is to be utilised, which is available as a loan device under the Order No. 613091.



PE 100 SDR 17

Maximum permissible working pressure 10 bar (water) / 5 bar (gas)



Reference	d	BX	PU	D	L	Weight kg
616535	355	1	1	497	705	36,500
616536	400	1	1	550	730	46,000
616537	450	1	1	602	750	135,000
616539	560	1	1	730	850	88,100
616523	630	1	1	805	940	135,000
616541	800	1	1	1005	1065	207,000
616434	1000	1	1	1245	1145	435,000
616435	1200	1	1	1450	1290	435,000

FRIALEN conical ring couplers KM-XL can be fused with SDR level 17 to 17,6 pipes.

25.12.24 - 18:09



# KM SDR 17

## Conical ring coupler, SDR 17

Processing of other SDR levels on request. Please note the mandatory labels directly on the product.

# KM SDR 17

## Conical ring coupler, SDR 17

### Areas of Application

FRIALEN conical ring couplers KM XL greatly simplify connections on pipes exhibiting large ovalities and tolerances and flattened points.

### Assembly Instructions

The conical ring coupler KM XL features a unique flexible conical ring coupler technology that adapts it to pipe surface irregularities. This variable range of diameter tolerances can also offset large tolerances on the pipe's outer diameter and ovality. Installation can proceed after the one scraping process only, without retaining devices and rounding clamps (for pipe ovalities up to 6%).

The preparations (removing the oxide layer/cleaning) and the assembly work (conical ring activation / fusion) are described in the general assembly instructions (see the instructions for the FRIALEN conical ring coupler KM XL).

The fusion of the pipe ends with the conical ring coupler KM XL takes place by FRIALEN-fusing – leakproof and longitudinally strong.

The conical ring coupler KM XL must be fused exclusively with the powerful fusion unit FRIAMAT XL fitted with a Y plug. The FRIAMAT XL is a universal solution operating with an input voltage of 400 V and output voltage of max 80 V.

The conical ring coupler KM XL d 1200 must be fused twice on both coupler sides (separate fusion of inside conical ring and outside conical ring).

### Good reasons for the FRIALEN conical ring coupler KM XL:

- Compact design
- Maximum stability thanks to large wall thicknesses
- Exposed heating coil for direct heat transfer to the pipe
- The mechanical flexible conical ring technology can minimise the gap width
- Easy and reliable installation, also on large pipe ovalities and tolerances and on local flattening
- One scraping process only to remove the oxide layer is enough
- No additional processing tools necessary like alignment clamps or rounding clamps
- Touch proof electric contacts
- Durable batch marking
- Individually wrapped for dirt protection
- Additional barcode for tracing back the fitting (Traceability-Coding).