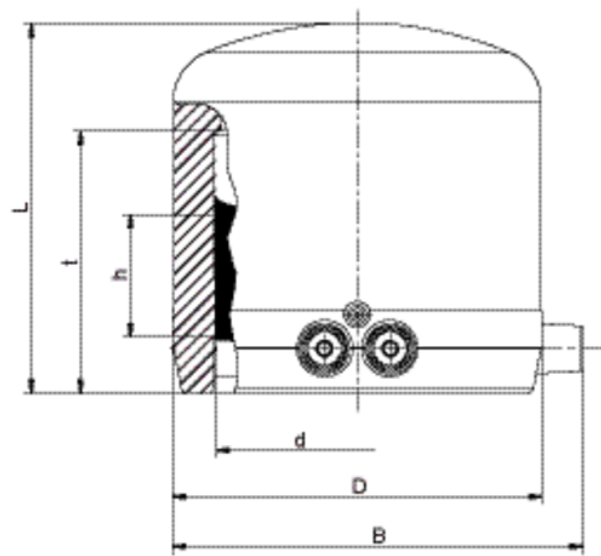


# MV SDR 11

## Cap, SDR 11

Cap MV SDR 11

- Gas, water and H<sub>2</sub>
- Maximum pressure: Gas 10 bar, Water 16 bar
- Material: PE 100
- Safety technology
- DVGW test mark: DV-8601AU2248 and DV-8606AU2249
- FM Approvals Class: 1613 (d 63 - d 225)



PE 100 SDR 11

Maximum permissible working pressure 16 bar (water) / 10 bar (gas)



Reference	d	BX	PU	D	L	t	h	B	Weight kg
612025	20	50	2500	31	62	41	22	46	0,035
612026	25	50	2500	35	65	41	22	51	0,040
612027	32	60	1920	44	70	44	24	61	0,060
612028	40	50	1600	55	75	49	28	70	0,090
612029	50	30	960	67	80	55	30	80	0,125
612030	63	20	640	84	88	63	31	96	0,210
612031	75	20	640	99	99	70	31	110	0,320
612032	90	16	288	118	114	79	40	130	0,500
612033	110	12	216	143	125	82	34	153	0,825
612034	125	8	144	163	135	87	42	168	1,160
612035	160	10	60	208	160	98	54	210	2,240
616183	180	6	48	224	157	100	46,5	225,5	2,180
616184	200	4	32	250,6	167	103	48	253	3,000

# MV SDR 11

## Cap, SDR 11

Reference	d	BX	PU	D	L	t	h	B	Weight kg
616185	225	4	32	279	184	114	48	281,6	3,970

FRIALEN safety fittings can be fused with SDR11 – SDR17.6 pipes. Other levels of SDR can be processed on request. Please note the mandatory labels directly on the product. DVGW test marks issued: DV-8601AU2248 and DV-8606AU2249

# MV SDR 11

## Cap, SDR 11

### Areas of Application

The FRIALEN-End Caps MV are used to close HD-PE pipe ends.

Also recommended as fused caps (d32 and d40) for the dome of FRIALEN-Pressure Tapping Tees DAA and DAP up to d63.

### Assembly Instructions

The fusion of a pipe end or the dome of a FRIALEN-Pressure Tapping Tee with the FRIALEN-End Cap MV takes place using FRIALEN-fusing – leakproof and longitudinally strong.

The fusion area is prepared according to the general installation instructions (see "Assembly Instructions" for "FRIALEN-Safety Fittings for house connections and distribution pipes up to d 225"). This involves removing the oxide skin and cleaning the pipe ends. Next to moulded fittings and accessories it is recommended to install a piece of pipe of 20 - 60 cm length, accordingly to the diameter, so that the pipeline can be continued later on.

### Good reasons for using the FRIALEN-End Caps MV:

- Large coupler depth for ease of pipe guiding (no holding clamps required)
- Extra wide fusion zones
- Maximum stability through great wall thickness
- Cold zones at the front side and in the middle of the coupler
- Exposed heating coil for direct heat transmission to the pipe
- Small annular gap for build-up of optimum joining pressure in the fusion zone
- Touch proof electric contacts
- Fusion indicator for visual fusion control
- Durable batch marking
- Individually wrapped for dirt protection
- Additional barcode for tracing back the fitting (Traceability-Coding)