

USTM

Transition fitting HD-PE/steel with female thread

Transition fitting steel pipe USTM

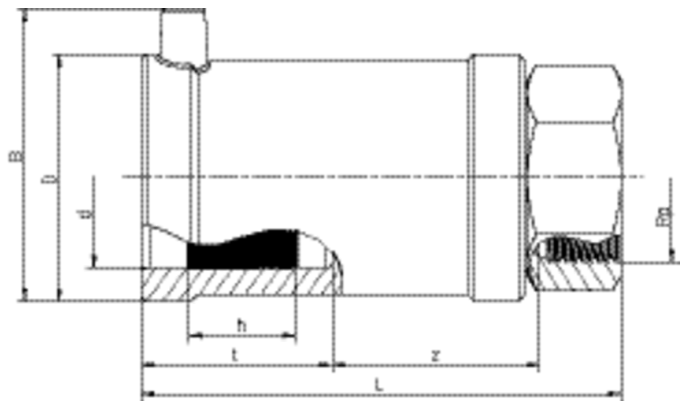
- Gas and H₂
- Working pressure: MOP (gas) 5 bar
- Material: PE 100 and steel (EN 10278; EN 10277-3 - 11SMn30+C -, thread to EN 10226-1)
- Safety technology

Note:

Anchored the steel side non-detachable and non-rotatable in the PE.

Self-sealing, patented sealing geometry without elastomeric gasket for use in gas applications.

Other thread dimensions available on request.



PE 100 SDR 11

Maximum permissible working pressure 5 bar (gas)



Reference	d	Rp	BX	PU	D	L	t	z	h	B	Weight kg
612570	32	1"	20	1080	47	112	42	49	24	61	0,350
612572	40	1 1/4"	20	800	58	121	46	53	30	70	0,510
612574	50	1 1/2"	15	600	70	136	53	60	30	80	0,650
612576	63	2"	10	400	84	141	53	61	35	94	1,020

Other thread dimensions on request

FRIALEN safety fittings can be fused with SDR11 - SDR17.6 pipes, minimum wall thickness s minimum ≥ 3 mm. Other levels of SDR can be processed on request. Please note the mandatory labels directly on the product. DVGW test mark issued: DV-7501AU2256

USTM

Transition fitting HD-PE/steel with female thread

Areas of Application

FRIALEN-Transition Fittings USTM are threaded joints as an adaptor from a metal pipe with external thread to a HD-PE pipe. Joint on the part of HD-PE by FRIALEN-Coupler.

Assembly Instructions

The threaded component must be held with a spanner to prevent it twisting in the HD-PE component. The fusion of the HD-PE side takes place by FRIALEN-fusing – leakproof and longitudinally strong.

The installation of the steel and the HD-PE side has to be prepared according to the general installation instructions (see "Transition Fittings with threaded connection" in "Assembly Instructions" for "FRIALEN-Safety Fittings for house connections and distribution pipes up to d 225"). This involves removing the oxide skin and cleaning the pipe ends.

Good reasons for using the FRIALEN-USTM:

- Compact construction
- HD-PE side with exposed heating element for optimal heat transfer
- Cold zones at the end to prevent the flow of molten material
- No holding clamps required
- Large insertion depth, extra wide fusion zones
- Steel end permanently anchored in the HD-PE and will not distort
- Self sealing patented sealing geometry without elastomer seal
- Additional barcode for tracing back the fitting (Traceability-Coding)