

MUN

Transition fitting in HD-PE/brass with male thread

Brass pipe transition fitting MUN

- Water
- Maximum pressure: Water 16 bar
- Material: PE 100 and brass (EN 12168 - CW617N, thread according to EN 10226-1)
- Safety technology

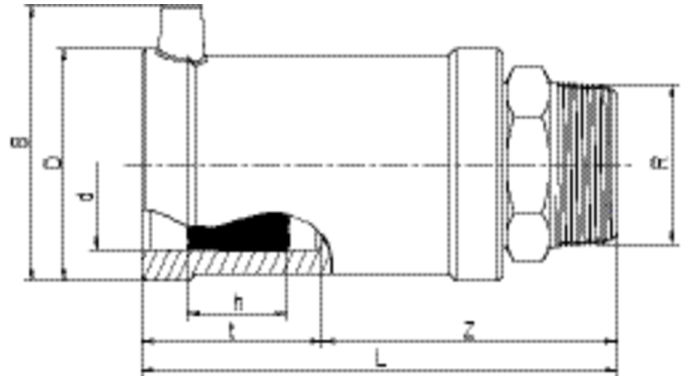
Note:

The brass side is anchored as non-detachable and non-rotatable in PE.

Self-sealing, patented sealing geometry without elastomeric seal for utilisation in water areas.

Default: Brass, gunmetal on request.

Other thread dimensions available on request.



PE 100 SDR 11

Maximum permissible working pressure 16 bar (water)



Reference	d	BX	PU	D	R	L	t	z	h	B	Weight kg
612712	32	20	1440	47	1"	112	42	70	24	61	0,310
612709	32	20	1080	47	1 1/4"	120	42	70	24	61	0,390
612698	32	15	810	47	1 1/2"	121	42	70	24	61	0,450
612721	40	20	800	58	1"	123	46	75	30	70	0,480
612713	40	20	800	58	1 1/4"	126	46	77	30	70	0,460
612718	40	20	800	58	1 1/2"	127	46	78	30	70	0,520
612725	40	20	600	58	2"	132	46	86	30	70	0,680
612719	50	15	600	70	1"	134	53	81	30	80	0,620
612716	50	15	600	70	1 1/4"	136	53	83	30	80	0,610
612714	50	15	600	70	1 1/2"	137	53	84	30	80	0,620
612706	50	15	600	70	2"	147	53	94	30	80	0,760
612722	63	10	400	84	1 1/4"	138	53	84	35	94	0,910
612717	63	10	400	84	1 1/2"	137	53	84	35	94	0,890

MUN

Transition fitting in HD-PE/brass with male thread

Reference	d	BX	PU	D	R	L	t	z	h	B	Weight kg
612715	63	10	400	84	2"	142	53	89	35	94	0,920

Other thread dimensions on request

FRIALEN safety fittings can be fused with SDR11 - SDR17.6 pipes, minimum wall thickness s minimum ≥ 3 mm. Other levels of SDR can be processed on request. Please note the mandatory labels directly on the product. DVGW test marks issued: DV-7501AU2256 and DV-7501AU2257

MUN

Transition fitting in HD-PE/brass with male thread

Areas of Application

FRIALEN-Transition Fittings MUN are threaded joints as an adaptor from a metal pipe with internal thread to a HD-PE pipe. Joint on the part of HD-PE by FRIALEN-Coupler.

Assembly Instructions

The threaded component must be held with a spanner to prevent it twisting in the HD-PE component. The fusion of the HD-PE side takes place by FRIALEN-fusing – leakproof and longitudinally strong.

The installation of the brass and the HD-PE side has to be prepared according to the general installation instructions (see "Transition Fittings with threaded connection" in "Assembly Instructions" for "FRIALEN-Safety Fittings for house connections and distribution pipes up to d 225"). This involves removing the oxide skin and cleaning the pipe ends.

Good reasons for using the FRIALEN-Transition Fittings MUN:

- Compact construction
- HD-PE side with exposed heating element for optimal heat transfer
- Cold zones at the end to prevent the flow of molten material
- No holding clamps required
- Large insertion depth, extra wide fusion zones
- Brass end permanently anchored in the HD-PE and will not distort
- Self sealing patented sealing geometry without elastomer seal
- Additional barcode for tracing back the fitting (Traceability-Coding)