

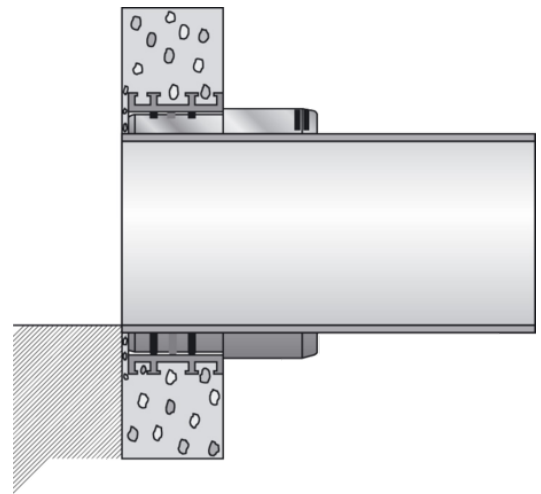
# ASF

## Shaft lining adapter for prefabricated concrete sewage inspection chambers

as joining element between concrete inspection chamber and FRIAFIT-Sewage Insert Sleeve (AEM)

Shaft lining adapter for prefabricated concrete sewage inspection chambers ASF

- Connecting element between concrete prefabricated manhole and sewage insert sleeve AEM
- Reversed anchoring webs (T-section) on the entire circumferential width always ensure a firm and tight fit in the concrete
- Defined internal surface and fitting ratio for reliable system seal with AEM
- Stable internal diameter due to large wall thickness
- Flush closure (inside and outside) in the concrete shaft sub-section according to DIN 4034



PE 100

Maximum permissible test pressure 0.5 bar to DIN EN 1610

Reference	d <sub>1</sub>	Pipe Diameter	BX	PU	D	L	Weight kg
680401	134	110	12	96	200	135	1,600
680402	190	160	8	64	250	135	1,900
680403	218	180	6	48	280	135	2,300
680404	250	200	4	32	315	135	2,700
680405	280	225 250	4	32	355	135	3,700
680407	316	280	4	32	400	135	4,800
680408	357	315	1	18	450	135	6,200
680409	402	355	1	18	500	135	7,400
680410	452	400	1	12	560	135	9,300
680411	502	450	3	6	630	135	12,700
680414	562	500	3	6	670	135	11,300
680412	628	560	3	6	710	135	8,800
680413	713	630	3	6	800	135	10,700

# ASF

## Shaft lining adapter for prefabricated concrete sewage inspection chambers

Sewage pipe systems are high-value assets of a value which has to be maintained for a long time. Increasing demands on the public sewage system require materials which meet these criteria. HDPE sewage pipes have been fused for many years with the FRIAFIT HDPE sewage system tightly, frictionlocked and root-proof.

### Areas of Application

The FRIAFIT-Sewage Inspection Chamber Adapter ASF is the joining element between concrete inspection chamber according to DIN 4034 and the FRIAFIT-Sewage Insert Sleeve AEM.

### Assembly Instructions

The ASF is usually fitted in at the concrete works during manufacture of the inspection chambers. Application of the ASF is possible even on local concrete inspection chambers.

The ASF Sewage Inspection Chamber Adapter is installed according to the general installation requirements (see also "Fitting Instructions" of the FRIAFIT-Sewage System).

### Good reasons for using the FRIAFIT-Sewage Inspection Chamber Adapter ASF

- The ASF is a corrosion resistant HDPE construction part
- Stable internal diameter due to big wall thickness
- Anchoring ribs twisted at the rear across the entire width ensure proper and leakfree anchoring in the concrete
- Width of component and connection HDPE/concrete correspond to DIN 4034
- Defined internal area for the reliable system sealing (AEM)
- For subsequent installation in bricks chambers a longer version **ASFL** (L = 250 mm) was developed