

# ASA VL 160

## Vacuum-loading sewage saddle

for connection of waste water domestic pipes to HDPE sewers, for FRIAFIT-fusion of HDPE pipes SDR 33 – SDR 11

Vacuum-loading sewage saddle ASA TL, SDR 17

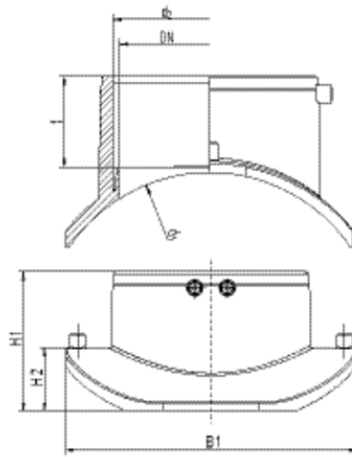
- Compact component made from HD-PE with integrated fusion coupler in the outlet (d 160)
- For a connection for connecting pipes to existing PE main channel
- Safety technology

### Note:

Can only be fused with the clamping system FRIALOAD.

Components: PUMP (Order No. 613810), PLATE (Order No. 617372) and FWAB ASA VL 160 (Order No 613816).

For installation on close-fit liners please contact our hotline +49 621 486-2325.



PE 100

Maximum permissible working pressure 2.5 bar

	Reference	d <sub>1</sub>	d <sub>2</sub>	DN	BX	PU	t	H1	H2	B1	B2	Weight kg
1	682618	200	160	150	8	64	76	163	92	270	210	0,990
	682613	225 250	160	150	8	64	76	165	94	270	230	0,943
	682614	280	160	150	10	80	76	143	72	270	240	0,802
	682615	315	160	150	10	80	76	139	68	270	250	0,986
	682620	355	160	150	10	80	76	129	58	270	255	0,952
	682621	400	160	150	10	80	76	123	52	270	255	0,894
	682616	450	160	150	10	80	76	117	46	270	255	0,882
	682622	500/560/630	160	150	10	80	76	117	46	270	255	0,900

<sup>1</sup> When using d 250 pipes please contact the hotline +49 621 486-1896.

For installation on close-fit liner, please contact our hotline +49 621/486-1896.

# ASA VL 160

## Vacuum-loading sewage saddle

Mounting with clamping device **FRIALOAD**.

Sewage pipe systems are high-value assets of a value which has to be maintained for a long time. Increasing demands on the public sewage system require materials which meet these criteria. HDPE sewage pipes have been fused for many years with the FRIAFIT HDPE sewage system tightly, frictionlocked and root-proof.

### Areas of Application

Domestic connections to HDPE sewers: These have up to now been carried out using spigot fittings which are connected to the pipe system with heating coil couplers. Retrospective connection to domestic pipes is only possible if the sewer pipe system is separated which is time consuming. The FRIAFIT-Sewage Saddle ASA VL 160 allows to establish domestic sewer connections without having to separate the existing pipeline.

### Assembly Instructions with vacuum clamping by clamping device FRIALOAD and tapping unit FWAB ASA d 160

The clamping force of the saddle required for fusion and build-up of the joining pressure is applied by a vacuum. This only requires the clamping device FRIALOAD. Typical out-of-roundnesses and shape deviations of the pipe can be bridged by the clamping method.

### Good reasons for using the FRIAFIT-Sewage Saddle ASA VL 160

- Economic establishing of domestic connections, particularly in areas with high density of development
- Can be used with new installations, restoration and retrospective connections of sewer pipes
- Minimal space required due to the compact component design. Pipe connections from HDPE are fused directly into the integrated heating coil coupler of the outlet socket
- Direct integration of connecting pipes without misalignment or flow obstructions
- No further components required due to integrated heating coil coupler in the outlet
- Barcode for fully automatic fusion process with HDPE pipes from SDR 33 to SDR 11 in view of the surrounding temperature (compensation of the temperature)
- Exposed, firmly embedded heating coil for an ideal heat transfer to the pipe
- External leak tightness (external pressure) confirmed by an independent institute