

# ASA VL KG 160

## Vacuum-loading transition saddle

for joining PVC / PP pipes DN 150 to HDPE sewage drains, for top loading fusion of HDPE pipes SDR 33 – SDR 11

Transition saddle, Vacuum-Loading ASA TL KG, SDR 17

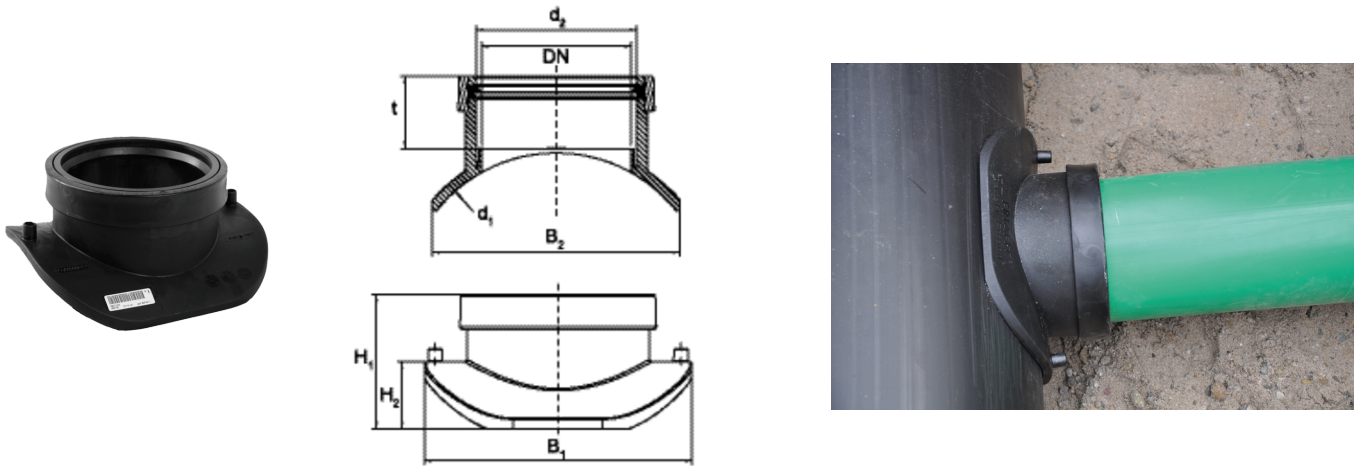
- Compact component made from HD-PE with integral socket in the outlet (d 160)
- For connecting connecting pipes made of PVC/PP DN 150 to existing PE main channel
- Safety technology

### Note:

Can only be fused with the clamping system FRIALOAD.

Components: PUMP (Order No. 613810), PLATE (Order No. 617372) and FWAB ASA VL 160 (Order No 613816).

For installation on close-fit liners and pipes d 560/d 630, please contact our hotline +49 621 486-2325.



PE 100

Maximum permissible test pressure 0.5 bar to DIN EN 1610

	Reference	d <sub>1</sub>	d <sub>2</sub>	DN	BX	PU	t	H1	H2	B1	B2	Weight kg
1	682624	225	160	150	8	64	76	165	94	270	230	1,192
	682625	280	160	150	10	80	76	143	72	270	240	1,106
	682626	315	160	150	10	80	76	139	68	270	250	1,106
	682627	355	160	150	10	80	76	129	58	270	255	1,106
	682628	450	160	150	10	80	76	117	46	270	255	1,136
	682629	500/560/630	160	150	10	80	76	117	46	270	255	1,136

<sup>1</sup> When using d 250 pipes please contact the hotline +49 621 486-1896.

For installation on close-fit liner, please contact our hotline +49 621/486-1896.

# ASA VL KG 160

## Vacuum-loading transition saddle

Sewage pipe systems are high-value assets of a value which has to be maintained for a long time. Increasing demands on the public sewage system require materials which meet these criteria. HDPE sewage pipes have been fused for many years with the FRIAFIT HDPE sewage system tightly, frictionlocked and root-proof.

### Areas of application

House service connections to HDPE sewers: Direct transition option of house service pipings made of PVC/PP by using the integrated plug-in sleeve DN 150. The plug-in sleeve has a SBR lip seal and a large insertion depth for a secure guiding of the pipe.

The FRIAFIT transition saddle ASA VL 160 KG facilitates the production of sewage house service connections without having to disconnect the existing HDPE sewer.

### Assembly Instructions with vacuum clamping

The clamping force of the saddle required for fusion and build-up of the joining pressure is applied by a vacuum. This only requires the clamping device FRIALOAD. Typical out-of-roundnesses and shape deviations of the pipe can be bridged by the clamping method.

### Good reasons for the FRIAFIT transition saddle ASA VL 160 KG

#### Saddle element

- Economic production of house service connections, in particular in case of a high building coverage
- Possible applications for new installation, refurbishment, and later connection of drain pipes
- Little space required thanks to compact component part, PVC / PP connecting pipes can be directly inserted into the sleeve element
- Direct connection of the connecting pipes without interfering displacement or drain obstructions
- Economic processing with the clamping device FRIALOAD
- Barcode for fully automatic fusion with HDPE pipes from SDR 33 to SDR 11, taking into consideration the ambient temperature (temperature compensation)
- Exposed, fixed heating coil for direct heat transfer to the pipe

#### Plug-in sleeve element

- Safe guiding of the PVC / PP pipe thanks to a large insertion depth
- SBR lip seal according to EN 681-1
- Standardised material transition