

130 junction channel HIGH

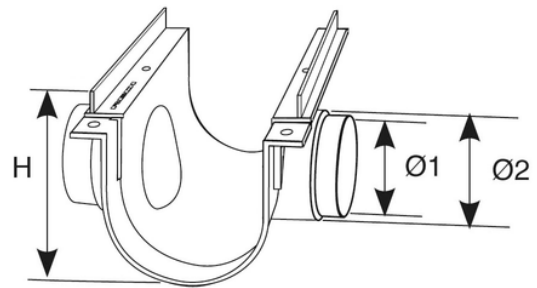
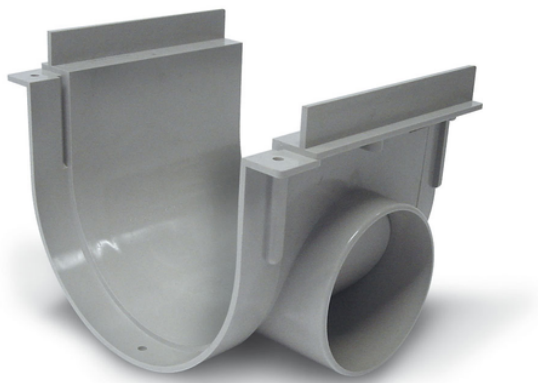
Linear evacuation by superficial drainage channels with grills.

These channels can be placed in flat open areas without digging limitations. Suitable for pedestrian areas.

Material: PVC.

Use: End cap for channel 130 (easy-to-open outlet).

N.B. Use solvent cement for PVC to weld the channels (Reference COLLA00 - COLLA25 - COLLA12).



Reference	tooltiplmage	RAL	H (mm)	Ø1 (mm)	Ø2 (mm)	Material
E1613A4	-	7035	134	75	80	PVC