

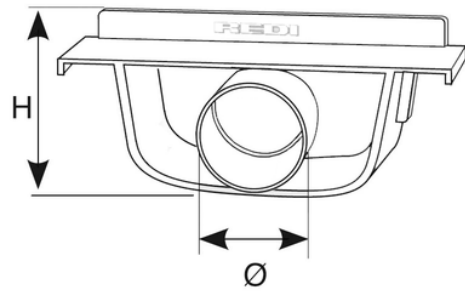
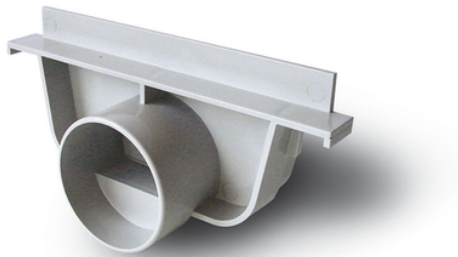
# 200 End cap-outlet LOW

Linear evacuation by superficial drainage channels with grills.

These channels can be placed in flat open areas without digging limitations. Suitable for pedestrian areas.

Material: PVC

Use: end cap for low channel 200 (easy-to-open outlet).



Reference	tooltiplmage	RAL	H (mm)	Ø (mm)	L (mm)	Material
E1719B4	-	7035	97	75	200	PVC
E1721B4	-	7035	97	80	200	PVC