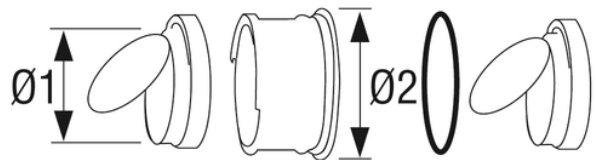
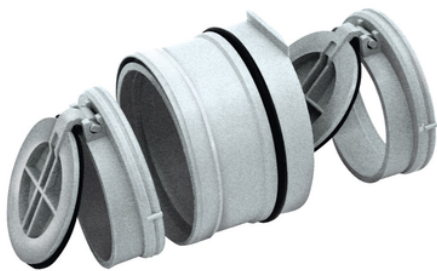


Double flap anti-backflow device

Especially designed for yards, garages cellars and any areas where a high drainage capacity is required.

Material: Polypropylene.

It may be fit in to high capacity floor drains d.100 to prevent back flooding.



Reference	tooltiplmage	RAL	Dim (mm)	Ø1 (mm)	Ø2 (mm)
EDP1104	-	7035	110	103	70