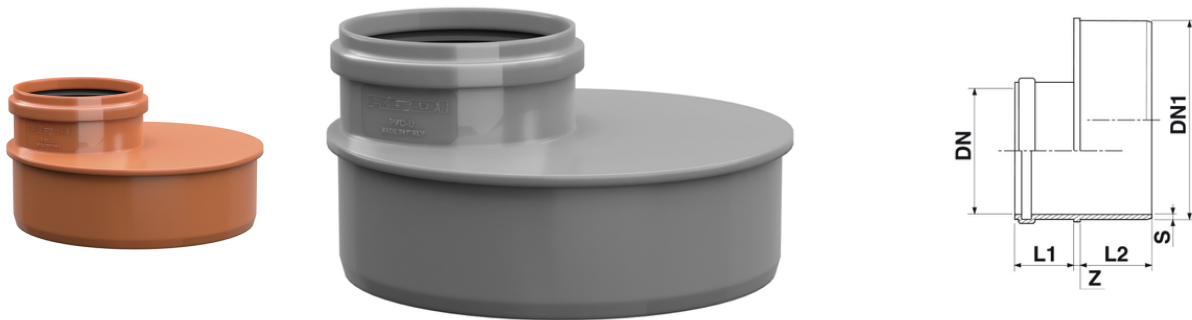


Flat invert reducer

Push-Fit PVC-U Fittings EN 1401
Gaskets EN 681-1 DIN 4060

RAL 8023 Red - RAL 7037 Grey



Reference	tootiplmage	DN (mm)	DN1 (mm)	S (mm)	Z (mm)	L1 (mm)	L2 (mm)	RAL	Type	Gasket	Version
1533542	-	110	200	4,6	40	60	59	7037	Fabricated	Bloccata/Fixed	-
1533551	-	110	200	4,6	40	60	59	8023	Fabricated	Standard	-
0534142	-	110	250	6,1	7	56	90	7037	-	Bloccata/Fixed	-
0534151	-	110	250	6,1	7	56	90	8023	-	Standard	-
1534051	-	110	315	7,7	40	60	93	8023	Fabricated	Standard	upon request
1535042	-	110	400	6,0	40	60	95	7037	Fabricated	Bloccata/Fixed	upon request
0534242	-	125	250	6,1	7	62	90	7037	Fabricated	Bloccata/Fixed	-
0534251	-	125	250	6,1	7	62	90	8023	-	A labbro	-
1534342	-	125	315	7,7	40	65	93	7037	Fabricated	Bloccata/Fixed	-
1534351	-	125	315	7,7	40	65	93	8023	Fabricated	Standard	upon request
1535542	-	125	400	6,0	40	65	95	7037	Fabricated	Bloccata/Fixed	-
1535551	-	125	400	6,0	40	65	95	8023	Fabricated	Standard	upon request
0534842	-	160	315	7,7	7	74	93	7037	-	Bloccata/Fixed	-
0534851	-	160	315	7,7	7	74	93	8023	-	Standard	-
1536042	-	160	400	6,0	50	85	95	7037	Fabricated	Bloccata/Fixed	upon request
1536542	-	200	400	6,0	50	95	95	7037	Fabricated	Bloccata/Fixed	upon request
1536551	-	200	400	6,0	50	95	95	8023	Fabricated	Standard	-
1537052	-	250	400	6,0	50	105	95	7037	Fabricated	Bloccata/Fixed	-
1537091	-	250	400	6,0	50	105	95	8023	Fabricated	Standard	-