

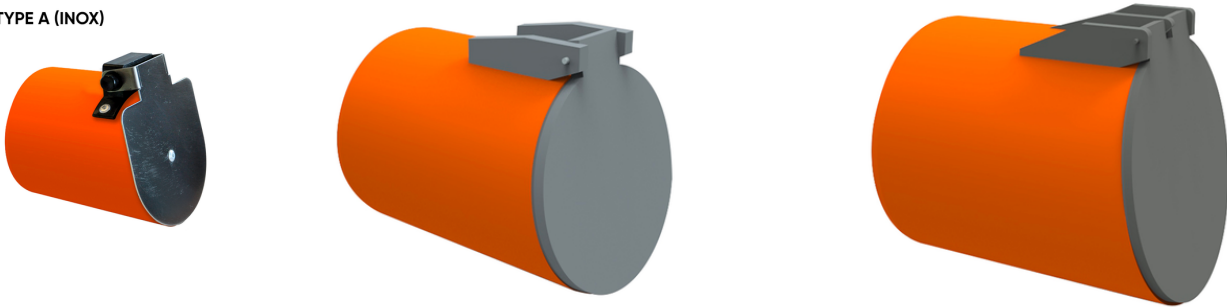
Flap valve Male

The flap valves allow the waste water to flow out from a pipe to either a ditch or a pond, preventing back flooding at the same time. The flap is opened by waste water's thrust. Flap's weight and 11° slant keep the device closed when not working.

TYPE B

TYPE C

TYPE A (INOX)



Reference	tooltiplmage	Colour	DN (mm)	H (mm)	L (mm)	α	RAL	Flaps	Design
P5510M1	-	Red	110	140	145	11°	RAL 8023	INOX	TYPE A
P5512M1	-	Red	125	155	165	11°	RAL 8023	INOX	TYPE A
P5516M1	-	Red	160	190	180	11°	RAL 8023	INOX	TYPE A
P5520M1	-	Red	200	230	205	11°	RAL 8023	INOX	TYPE A
P5525M1	-	Red	250	280	260	11°	RAL 8023	-	TYPE B
P5530M1	-	Red	315	350	300	11°	RAL 8023	-	TYPE B
P5540M1	-	Red	400	430	350	11°	RAL 8023	-	TYPE C
P5550M1	-	Red	500	530	400	11°	RAL 8023	-	TYPE C
P5563M1	-	Red	630	660	550	11°	RAL 8023	-	TYPE C