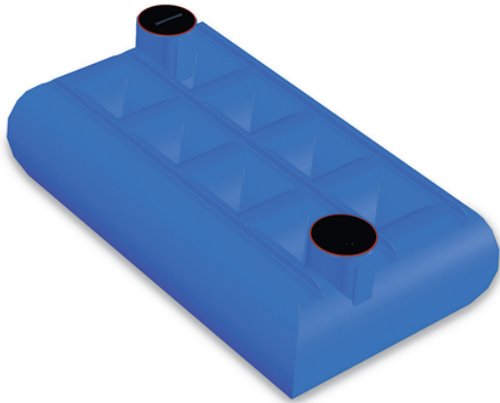


FLAT, horizontal container

Low rectangular shaped polyethylene container. Its very shallow depth makes it particularly suitable for installation where producing a deep pit is difficult or not financially viable.



Reference	tooltiplmage	Height H (cm)	I (cm)	L (cm)	Capacity (litres)	Item
IS02250	-	120	200	350	5.000	FLAT