

# Emergency overflow set for Akasison XL75 and XL90

The emergency overflow set can be applied in combination with Akasison roof outlets XL75 and 90.

Delivery includes: Emergency overflow flange.

EPDM seal.

Air baffle and leaf guard fixation extension (set of 2).

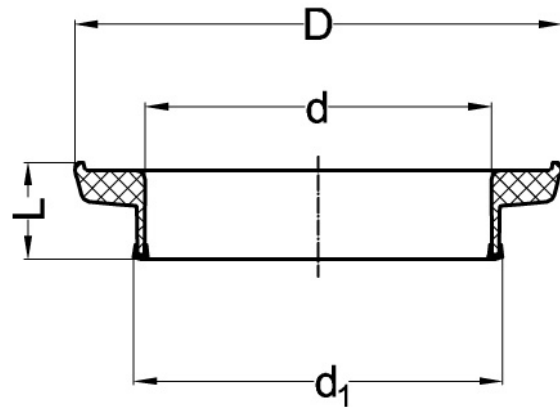
Application: Emergency overflow system.

Performance: 1-17,7 l/s.

Material: ASA, EPDM and stainless steel.

n = number of bolts

M = thread



Reference	Name	tooltiplmage	Kg	L	d	d1	D	n	M
74 75 90	Emergency overflow set for Akasison XL75 and XL90	-	0,500	44	176	187	245	2	8