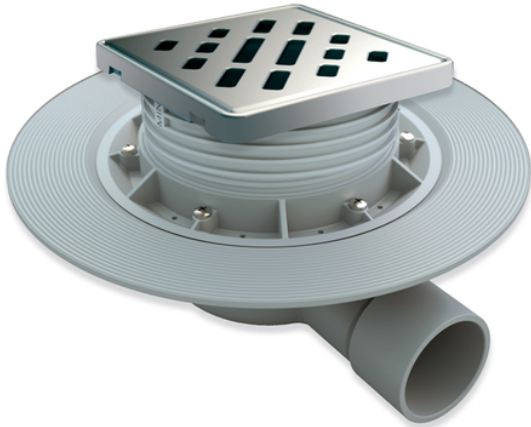


Floor gully for shower tray works - horizontal outlet

Floor gully for shower tray works horizontal PVC outlet. Stainless Steel grid 112 x 112 mm.



Reference	tooltiplmage	characteristics	Box units	measurement
013627	-	B - Chromed	4	Ø40M-Ø50M
013821	-	A-Satin	4	Ø40M-Ø50M
013827	-	B-Satin	4	Ø40M-Ø50M
013902	-	D-Satin	4	Ø40M-Ø50M
013903	-	D - Chrome	4	Ø40M-Ø50M
113821	-	A-Satin-Anti-vandalism	4	Ø40M-Ø50M