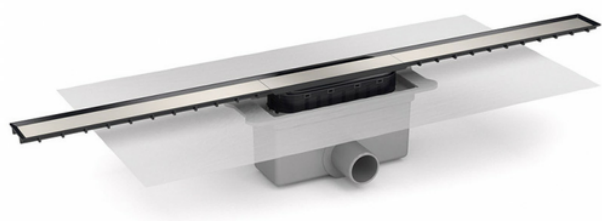


Channel with grid 40mm width for masonry built shower. Horizontal outlet 40F/50M. 50 mm trap. Grid in Stainless Steel. With preinstalled geotextile membrane

Channel with grid 40mm width in different length. Registrable trap, Hair filter. Horizontal outlet 40F/50M. With preinstalled geotextile membrane (600x600 mm).



Reference	tooltiplmage	Box units	measurement
13035	-	1	40x350 mm.
13036	-	1	40x650 mm.
13037	-	1	40x750 mm.
13038	-	1	40x850 mm.
13039	-	1	40x950 mm.