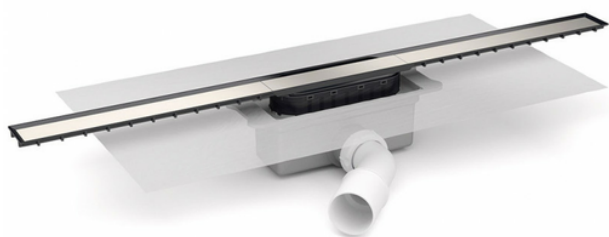


# Channel with grid 40mm width for masonry built shower. Horizontal orientable outlet 40M/50M. 30 mm trap. Grid in Stainless Steel. With preinstalled geotextile membrane

Channel with grid 40mm width in different length. Registrable trap, Hair filter. Horizontal orientable outlet 40M/50M. With preinstalled geotextile membrane (600x600 mm)



Reference	tooltiplmage	Box units	measurement
13055	-	1	40x350 mm.
13056	-	1	40x650 mm.
13057	-	1	40x750 mm.
13058	-	1	40x850 mm.
13059	-	1	40x950 mm.