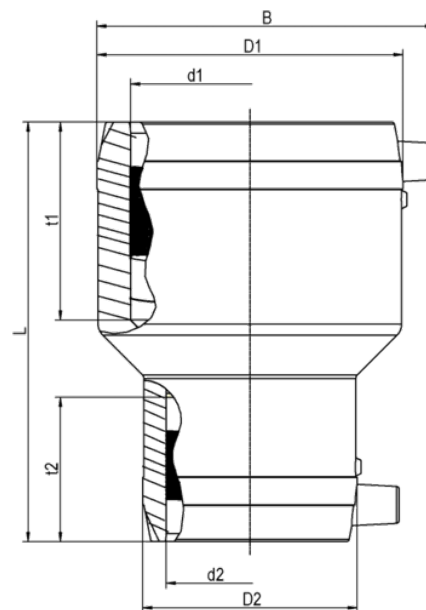


MR SDR 11

Reducer, SDR 11

Reducer MR, SDR 11

- Gas, water and H₂
- Working pressure: MOP (gas) 10 bar, PFA (water) 16 bar
- Material: PE 100
- Safety technology
- Large insertion depth for good pipe routing (no holding devices required)
- DVGW test mark: DV-8601AU2248 and DV-8606AU2249
- FM Approvals Class: 1613 (d 90/63 - d 110/63 + d 110/90 - d 125/90 + d 160/110 - d 225/160)



PE 100 SDR 11

Maximum permissible working pressure 16 bar (water) / 10 bar (gas)



Reference	d ₁	d ₂	BX	PU	L	t ₁	t ₂	B	d ₂	Weight kg
616824	20	16	1	2240	75	36	36	44	28	0,040
616452	32	16	80	2560	91	39	34	62	28	0,080
615386	32	20	80	2560	88	39	30	62	32	0,070
615502	32	25	70	2240	88	39	33	62	38	0,080
615387	40	20	60	1920	98	43	30	70	32	0,090
616751	40	25	1	1280	101	50	40	66	38	0,090
615388	40	32	50	1600	98	43	39	70	45	0,100
616752	50	25	1	960	107	52	39	77	38	0,120
612070	50	32	32	1024	110	49	39	82	45	0,150
612071	50	40	25	800	110	49	43	82	54	0,150
615389	63	32	18	576	125	55	44	96	45	0,210
615390	63	40	16	512	125	55	43	96	54	0,230

MR SDR 11

Reducer, SDR 11

Reference	d ₁	d ₂	BX	PU	L	t ₁	t ₂	B	d ₂	Weight kg
612072	63	50	16	512	125	55	48	96	68	0,230
616583	75	63	15	270	143	61	55	110	79	0,300
615391	90	50	15	270	160	69	49	129	68	0,480
615392	90	63	15	270	160	69	55	129	82	0,510
616582	90	75	15	270	159	67	63	127	94	0,510
615393	110	63	10	180	160	79	55	152	82	0,730
615693	110	90	8	144	180	79	69	152	115	0,880
615694	125	90	8	144	200	86	69	166	115	0,990
616510	125	110	16	128	202	95	70	172	137	1,160
615695	160	110	8	64	230	98	79	207	140	2,000
616511	180	125	1	60	275	108	74	230	155	2,300
616356	225	160	1	36	270	110	98	283	203	4,860

FRIALEN safety fittings can be fused with SDR11 - SDR17.6 pipes, with the exception of dimensions d 125/110 and d 180/125. These can be fused with SDR9 - SDR26 pipes. Other levels of SDR can be processed on request. Please note the mandatory labels directly on the product. DVGW test marks issued: DV-8601AU2248 and DV-8606AU2249

MR SDR 11

Reducer, SDR 11

Areas of Application

The FRIALEN Electrofusion Reducer MR is applied for immediate pipe reduction within the pipe system.

Assembly Instructions

Fusing of pipe ends with the FRIALEN Electrofusion Reducers MR takes place by FRIALEN fusion – leakproof and longitudinally strong.

The pipe ends are prepared according to the general installation instructions (note "Assembly Instructions" for FRIALEN Safety Fittings for house connections and distribution pipes (remove oxide layer/clean).

Good reasons for using the FRIALEN Electrofusion Reducers MR:

- Large coupler depth for ease of pipe guiding (no holding clamps required)
- Extra wide fusion zones
- Maximum stability through great wall thickness
- Cold zones at the front side and in the middle of the coupler
- Exposed heating coil for direct heat transmission to the pipe
- Small annular gap for build-up of optimum joining pressure in the fusion zone
- Touch proof electric contacts
- Fusion indicator for visual fusion control
- Durable batch marking
- Individually wrapped for dirt protection
- Additional barcode for tracing back the underground fitting (Traceability-Coding)