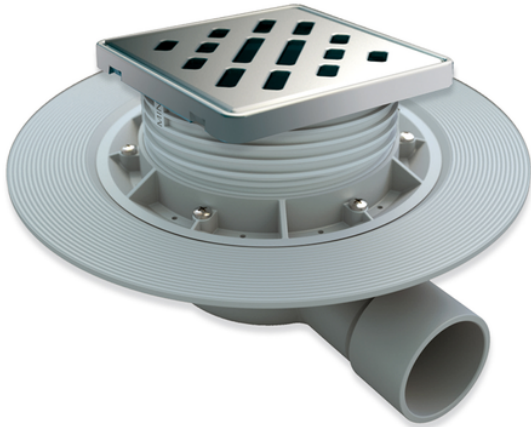


S-520

Floor gully for shower tray works - horizontal outlet

Floor gully for shower tray works horizontal PVC outlet. Stainless Steel grid 112 x 112 mm.



Reference	tooltiplmage	characteristics	Box units	measurement
013627	/_default_upload_bucket/R-141.svg	B - Chromed	4	Ø40M-Ø50M
013821	/_default_upload_bucket/R-141.svg	A-Satin	4	Ø40M-Ø50M
013827	/_default_upload_bucket/R-141.svg	B-Satin	4	Ø40M-Ø50M
013902	/_default_upload_bucket/R-141.svg	D-Satin	4	Ø40M-Ø50M
013903	/_default_upload_bucket/R-141.svg	D - Chrome	4	Ø40M-Ø50M