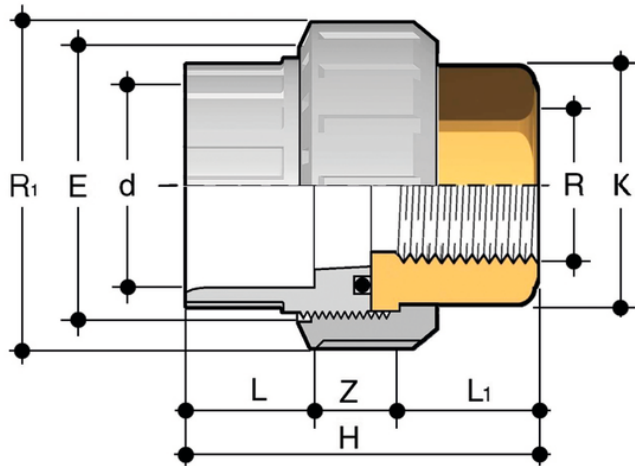
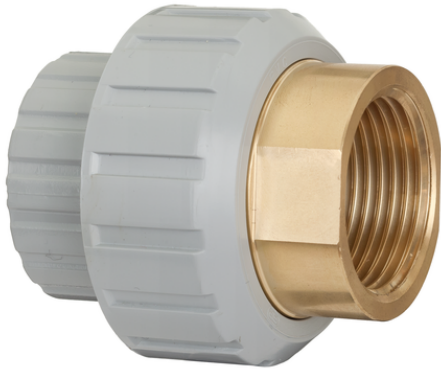


BIFOC – Adaptor union

Adaptor union in PVC-C/brass with solvent weld socket d and BSP threaded brass female end R with O-Ring in EPDM.



| Reference | system | Category | family | d x R | R ₁ | PN | E | H | K | L | L ₁ | Z | g |
|--------------|--------------|-------------------|------------------|-------------|----------------|----|----|------|----|----|----------------|------|------|
| BIFOC016038E | PVC-C system | Pressure Fittings | ISO-BSP Fittings | 16 x 3/8" | 3/4" | 16 | 33 | 45,5 | 20 | 14 | 13,5 | 18 | 55 |
| BIFOC020012E | PVC-C system | Pressure Fittings | ISO-BSP Fittings | 20 x 1/2" | 1" | 16 | 41 | 48,5 | 25 | 16 | 16,5 | 16 | 88,5 |
| BIFOC025034E | PVC-C system | Pressure Fittings | ISO-BSP Fittings | 25 x 3/4" | 1 1/4" | 16 | 50 | 54,5 | 32 | 19 | 18,5 | 17 | 165 |
| BIFOC032100E | PVC-C system | Pressure Fittings | ISO-BSP Fittings | 32 x 1" | 1 1/2" | 16 | 58 | 59,5 | 38 | 22 | 19,5 | 18 | 187 |
| BIFOC040114E | PVC-C system | Pressure Fittings | ISO-BSP Fittings | 40 x 1 1/4" | 2" | 16 | 72 | 68,5 | 48 | 26 | 21,5 | 21 | 379 |
| BIFOC050112E | PVC-C system | Pressure Fittings | ISO-BSP Fittings | 50 x 1 1/2" | 2 1/4" | 16 | 79 | 84,5 | 55 | 31 | 23 | 30,5 | 475 |
| BIFOC063200E | PVC-C system | Pressure Fittings | ISO-BSP Fittings | 63 x 2" | 2 3/4" | 16 | 98 | 94,5 | 69 | 38 | 27 | 29,5 | 837 |