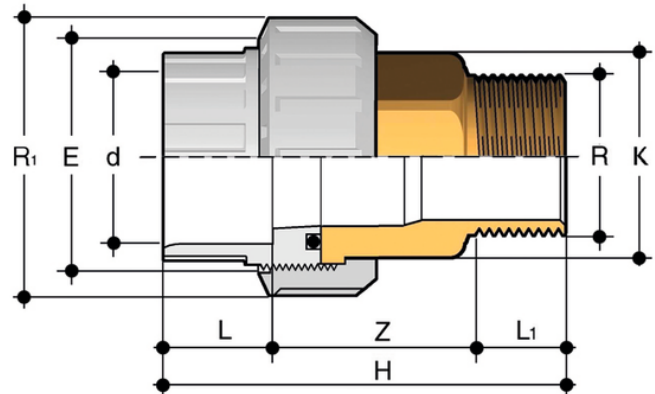
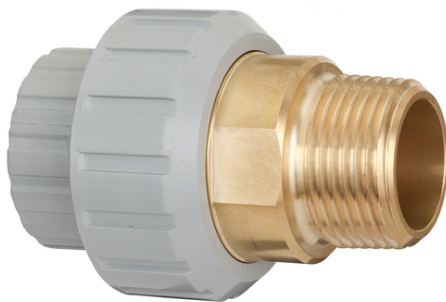


# BIROC – Adaptor union

Adaptor union in PVC-C/brass with solvent weld socket d and BSP threaded brass male end R with O-Ring in EPDM.



| Reference    | system       | Category          | family           | d x R       | R <sub>1</sub> | PN | E  | H     | K  | L  | L <sub>1</sub> | Z    | g     |
|--------------|--------------|-------------------|------------------|-------------|----------------|----|----|-------|----|----|----------------|------|-------|
| BIROC016038E | PVC-C system | Pressure Fittings | ISO-BSP Fittings | 16 x 3/8"   | 3/4"           | 16 | 33 | 58,5  | 20 | 14 | 10,5           | 34   | 81    |
| BIROC020012E | PVC-C system | Pressure Fittings | ISO-BSP Fittings | 20 x 1/2"   | 1"             | 16 | 41 | 65    | 25 | 16 | 13,5           | 35,5 | 133,5 |
| BIROC025034E | PVC-C system | Pressure Fittings | ISO-BSP Fittings | 25 x 3/4"   | 1 1/4"         | 16 | 50 | 72,5  | 32 | 19 | 15             | 38,5 | 223   |
| BIROC032100E | PVC-C system | Pressure Fittings | ISO-BSP Fittings | 32 x 1"     | 1 1/2"         | 16 | 58 | 80    | 38 | 22 | 17,5           | 40,5 | 294   |
| BIROC040114E | PVC-C system | Pressure Fittings | ISO-BSP Fittings | 40 x 1 1/4" | 2"             | 16 | 72 | 91    | 48 | 26 | 19,5           | 45,5 | 558   |
| BIROC050112E | PVC-C system | Pressure Fittings | ISO-BSP Fittings | 50 x 1 1/2" | 2 1/4"         | 16 | 79 | 101   | 55 | 31 | 19,5           | 50,5 | 696   |
| BIROC063200E | PVC-C system | Pressure Fittings | ISO-BSP Fittings | 63 x 2"     | 2 3/4"         | 16 | 98 | 122,5 | 69 | 38 | 24             | 60,5 | 1196  |