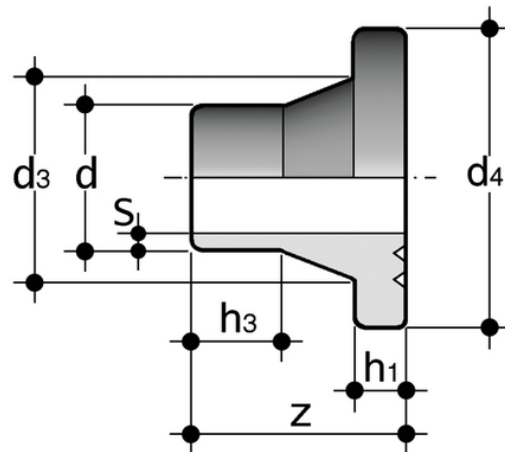
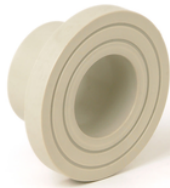


# QBM - Special stub SDR 11 - S 5

Chamfered stub flange short spigot for butt welding to be used with FE/FK butterfly valves SDR 11 - S 5.



| Reference                              | tooltiplmage | system      | Category          | family                        | Valve d | Tubo d | d <sub>3</sub> | d <sub>4</sub> | h <sub>1</sub> | h <sub>3</sub> | S    | g     |
|--|--------------|-------------|-------------------|-------------------------------|---------|--------|----------------|----------------|----------------|----------------|------|-------|
| QBM PP-H special stub flange for FE/FK | -            | PP-H system | Pressure Fittings | ISO-UNI Fittings Butt Welding | 160     | 160    | 175            | 212            | 25             | 52             | 14,6 | 1120  |
| QBM PP-H special stub flange for FE/FK | -            | PP-H system | Pressure Fittings | ISO-UNI Fittings Butt Welding | 225     | 200    | 232            | 268            | 32             | 50             | 18,2 | 2160  |
| QBM11FK225                             | -            | PP-H system | Pressure Fittings | ISO-UNI Fittings Butt Welding | 225     | 225    | 235            | 268            | 32             | 65             | 20,5 | 2170  |
| QBM11FK250                             | -            | PP-H system | Pressure Fittings | ISO-UNI Fittings Butt Welding | 280     | 250    | 285            | 320            | 35             | 51             | 22,7 | 2920  |
| QBM11FK280                             | -            | PP-H system | Pressure Fittings | ISO-UNI Fittings Butt Welding | 280     | 280    | 291            | 320            | 35             | 45             | 22,7 | 3200  |
| QBM11FK315                             | -            | PP-H system | Pressure Fittings | ISO-UNI Fittings Butt Welding | 315     | 315    | 335            | 370            | 35             | 86             | 28,6 | 5530  |
| QBM11FK355                             | -            | PP-H system | Pressure Fittings | ISO-UNI Fittings Butt Welding | 355     | 355    | 373            | 430            | 40             | 90             | 32,2 | 7730  |
| QBM11FK400                             | -            | PP-H system | Pressure Fittings | ISO-UNI Fittings Butt Welding | 400     | 400    | 427            | 482            | 46             | 95             | 36,3 | 10490 |