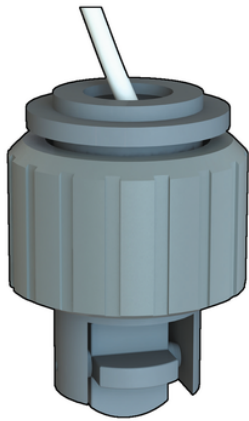


F3.10.H.XX

Mini Paddlewheel Flow Sensor



Reference	tooltiplmage	system	Category	family	series	Version	Power supply	Lenght	Main Wetted Materials	Enclosure	Flow Rate Range
F3.10.H.01	-	Automation system	FLS Measurement and control Instrumentation	Flow sensors	Insertion Paddlewheel and Electromagnetic Flow Sensors	Hall	5- 24 VCC	41 mm	ABS \$ EPDM	IP68	From 0,15 to 4 m/s*
F3.10.H.02	-	Automation system	FLS Measurement and control Instrumentation	Flow sensors	Insertion Paddlewheel and Electromagnetic Flow Sensors	Hall	5- 24 VCC	41 mm	ABS \$ FKM	IP68	From 0,15 to 4 m/s*



F3.10.H.XX

APPLICATIONS:

- Water treatment
- Filtration systems
- Pure water production
- Water monitoring
- Fertigation

MAIN FEATURES:

- IP68 enclosure
- ABS body with EPDM or FPM seal
- ABS 4-blade paddlewheel (no bearings)
- Mono-directional design
- Installation on standard FIP tees
- PVDF body version on request