

# VAM RG TL

## Valve tapping saddle top-loading with HD-PE/gunmetal adapter

Valve tapping saddle with HD-PE/gunmetal adapter VAM RG TL

- Gas, water
- Working pressure: MOP (gas) 10 bar, PFA (water) 16 bar
- Material: PE 100 and gunmetal (female thread)
  - Universal clamping option (top loading):
  - Safe clamping with FRIATOP
- Safety technology
- Metals in contact with water according to UBA (Federal Environment Agency, Germany) recommendation

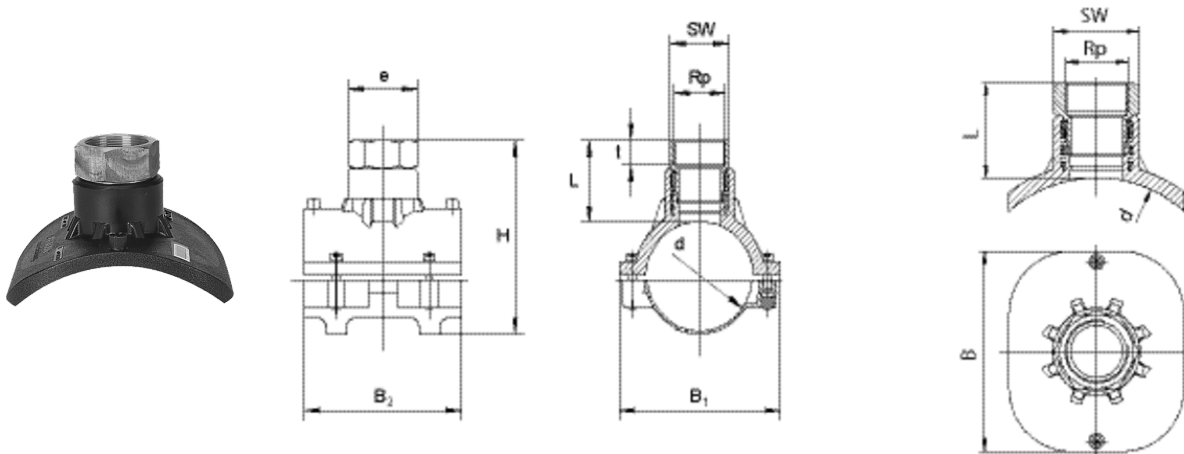
**Note:**

Can only be used with the clamping device FRIATOP (Order No. 613350).

For accommodating commercially available brass valves.

Dimension range d 250 - d 560 can be fused as standard in the top loading process.

As a complete solution, we recommend our DAV tapping valve.



PE 100 SDR 11

Maximum permissible working pressure 16 bar (water) / 10 bar (gas)



Reference	d	Rp	BX	PU	L	t	B	Weight kg
615470	250 - 560	2"	8	144	90	27	200	1,510