

# EFL

## Full faced flange (spigot fitting)

Flange adapter and flange EFL

- Water and gas
- Maximum pressure: Water 16 bar, gas 10 bar (for UK: MOP 7 bar)
- Material: PE 100 and metal insert

### Note:

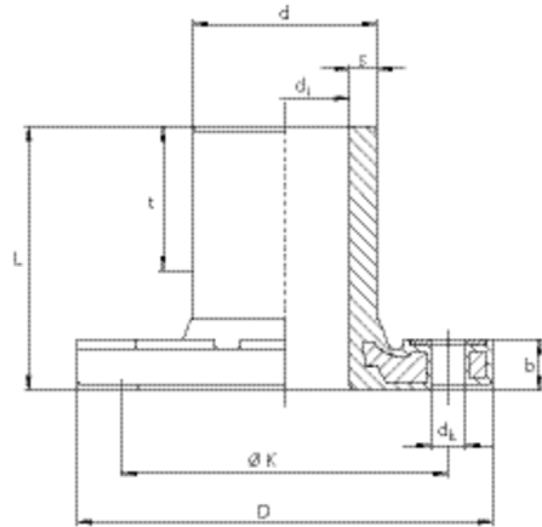
Metal insert in flange in order to prevent cold flow.

Fused side for processing with FRIALEN couplers MB or UB.

When the gasket is selected it shall be suitable for the intended medium and an approval may be required according to national regulations, e.g. for drinking water, gas or H<sub>2</sub>. We recommend G-ST seals (Rubber-steel flange gasket).

Note the screw tightening torques after specifying the seal manufacturer or DVS.

Additional washers are required.



PE 100 SDR 11

Maximum permissible working pressure 16 bar (water) / 10 bar (gas)



Reference	d/DN	BX	PU	D	L	t	dk	di	Ø k	s	Holes	b	Weight kg
615417	63/50	5	250	169	105	53	17	51	125	5,8	4	23	1,500
615418	90/80	5	160	204	130	71	17	72	160	8,2	8	25	2,540
615419	110/100	3	96	224	150	83	17	87	180	10	8	27	3,310
615605	125/100	2	64	224	160	85	17	101	180	11,4	8	30	3,280
615421	160/150	2	36	288	190	120	21	127	240	14,6	8	29	6,140
615927	180/150	2	36	288	200	120	21	123	240	16,4	8	31	6,660

**EFL**

## Full faced flange (spigot fitting)

	Reference	d/DN	BX	PU	D	L	t	dk	di	Ø k	s	Holes	b	Weight kg
1	615607	225/200	1	27	343	225	120	21	180	295	20,4	8	31	9,100

<sup>1</sup> Flange drill hole for PN 10

## EFL

# Full faced flange (spigot fitting)

### Areas of Application

The FRIALEN Full Faced Flange EFL is used for the connection between HD-PE and another material or valve up to PN 16. EFL d 63-180 bolt circle for PN 10 and PN 16. EFL d 225/DN 200 is available only with a PN 10 bolt circle.

### Assembly Instructions

The Full Faced Flange is installed without pressure. Please refer to the FRIALEN Assembly Instructions regarding preparations for FRIALEN fusion on the flange adaptor (marking insertion depth, removing oxide skin, cleaning etc.).

DIN EN 1092-1 applies to bolt circle diameter, measurements and number of bolts.

All commercial profile and flat gaskets can be used. Please observe the bolt torque specifications by the gasket manufacturer. We recommend profile gaskets type G-St.

### Good reasons for the FRIALEN-Full Faced Flanges EFL:

- Flange adaptor and flange are one construction component and make a homogeneous unit
- The cold flowing properties well known with HD-PE are avoided through this constructive configuration
- Solid construction. Integration of the flange prevents tear-off