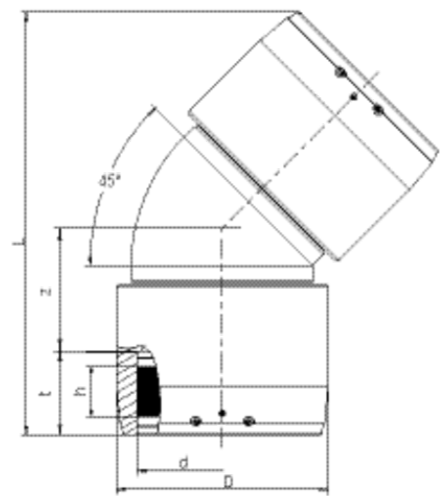
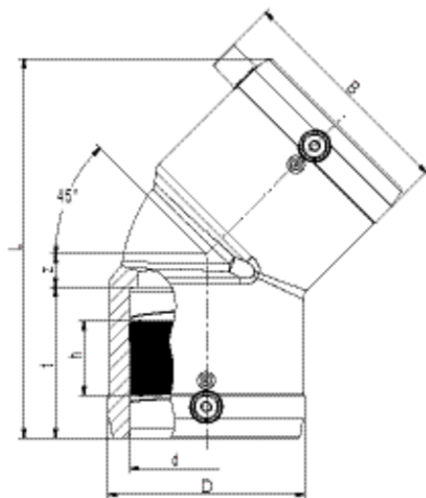


W45 SDR 11

Elbow 45°, SDR 11

Elbow W45 SDR 11

- Gas, water and H₂
- Maximum pressure: Gas 10 bar, Water 16 bar
- Material: PE 100
- Angle 45 degrees
- Safety technology
- DVGW test mark: DV-8601AU2248, DV-8606AU2249 and DV-8611AU2250
- FM Approvals Class: 1613 (d 63 - d 225)



PE 100 SDR 11

Maximum permissible working pressure 16 bar (water) / 10 bar (gas)



Reference	d	BX	PU	D	L	t	z	h	B	Weight kg
616687	25	150	2400	35	89	38	7	17	48	0,050
612092	32	50	1600	43	102	44	8	21	60	0,070
612094	40	30	960	54	120	49	11	29	70	0,110
612096	50	20	640	66	136	54	13	32	80	0,175
612098	63	10	320	82	158	62	14	34	95	0,295
612100	75	14	252	96	198	70	29	38	111	0,520
612102	90	8	144	115	232	79	35	45	128	0,810
612104	110	10	80	138	265	85	41	50	150	1,320
612106	125	10	80	157	279	87	46	44	167	1,770
615275	160	4	32	207	377	92	88	44	210	4,410
615687	180	3	24	228	382	97	83	65	229	4,610
616264	200	1	18	254	415	106	87	54	256	6,760
615688	225	1	8	280	450	112	98	66	281	8,290
616404	250	1	6	310	621	128	176	80	-	17,300

W45 SDR 11

Elbow 45°, SDR 11

Reference	d	BX	PU	D	L	t	z	h	B	Weight kg
616405	280	1	4	350	702	139	205	84	-	25,600
616406	315	1	2	396	755	150	215	80	-	36,000

FRIALEN safety fittings can be fused with SDR11 - SDR17,6 pipes. For W 45 > d 225 separate fusion zones per socket side.

Minimum wall thickness s minimum ≥ 3 mm.

Other levels of SDR can be processed on request.

Please note the mandatory labels directly on the product.

DVGW test marks issued: DV-8601AU2248, DV-8606AU2249 and DV-8611AU2250

W45 SDR 11

Elbow 45°, SDR 11

Areas of Application

The FRIALEN-Elbow W45° is used for all changes of direction in HD-PE pipes.

Assembly Instructions

The fusion of the pipe ends with the FRIALEN-Elbows W45° takes place by FRIALEN-fusing – leakproof and longitudinally strong.

The pipe ends are prepared according to the general installation instructions (see Assembly Instructions for FRIALEN-Safety Fittings for house connections and distribution pipes up to d 225). This involves removing the oxide skin and cleaning the pipe ends.

Good reasons for using the FRIALEN-Elbows W45°:

- Large coupler depth for ease of pipe guiding (no holding clamps required)
- Extra wide fusion zones
- Maximum stability through great wall thickness
- Cold zones at the front side and in the middle of the coupler
- Exposed heating coil for direct heat transmission to the pipe
- Small annular gap for build-up of optimum joining pressure in the fusion zone
- Contacts safe to touch
- Fusion indicator for visual fusion control
- Durable batch marking
- Individually wrapped for dirt protection
- Additional barcode for tracing back the fitting (Traceability-Coding)