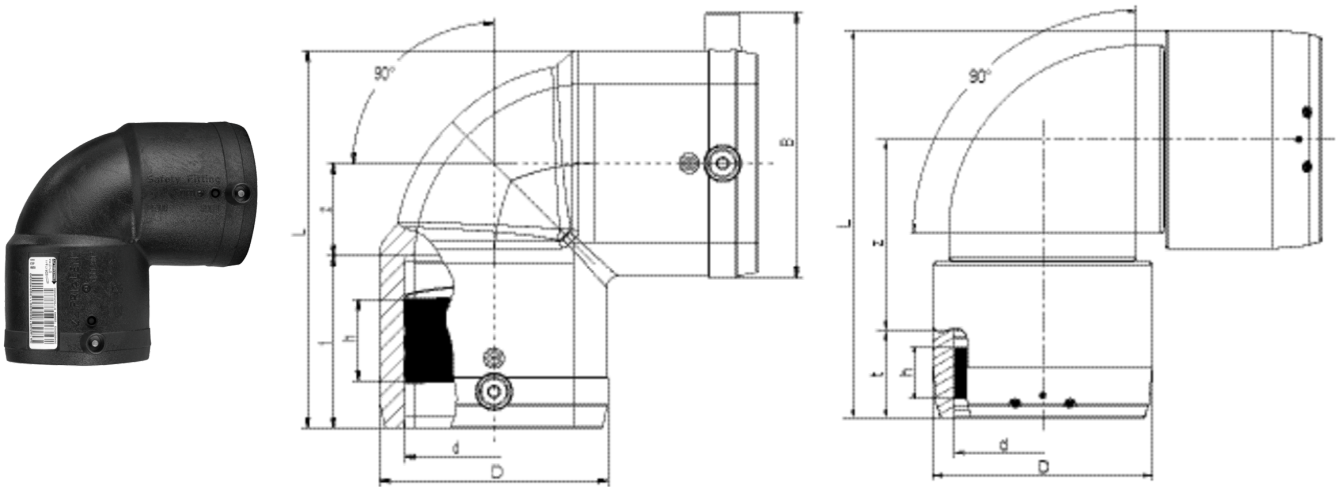


W90 SDR 11

Elbow 90°, SDR 11

Elbow W90 SDR 11

- Gas, water and H₂
- Maximum pressure: Gas 10 bar, Water 16 bar
- Material: PE 100
- Angle 90 degrees
- Safety technology
- DVGW test mark: DV-8601AU2248, DV-8606AU2249 and DV-8611AU2250
- FM Approvals Class: 1613 (d 63 - d 315)



PE 100 SDR 11

Maximum permissible working pressure 16 bar (water) / 10 bar (gas)



Reference	d	BX	PU	D	L	t	z	h	B	Weight kg
616686	20	200	3200	28,5	71	30	12	16	41	0,040
612091	25	60	1920	37	73	40	15	19	54	0,060
612093	32	50	1600	43	82	44	16	21	61	0,070
612095	40	30	960	53	96	49	21	29	70	0,110
612097	50	20	640	66	113	55	26	32	81	0,190
612099	63	10	320	83	136	62	33	30	96	0,340
612101	75	12	216	96	170	70	53	37	111	0,600
612103	90	6	108	115	202	75	65	45	128	0,950
612105	110	10	80	138	234	81	84	50	150	1,560
612107	125	8	64	157	254	87	89	44	167	2,030
615276	160	3	24	207	329	92	133	44	210	4,850
615689	180	3	24	228	354	94	146	65	229	5,760
616265	200	2	16	254	392	106	159	54	256	8,557
615690	225	1	8	280	430	113	177	66	281	10,220

W90 SDR 11

Elbow 90°, SDR 11

Reference	d	BX	PU	D	L	t	z	h	B	Weight kg
616408	250	1	6	310	534	128	251	80	-	19,100
616409	280	1	2	350	621	139	307	84	-	27,500
616410	315	1	2	396	677	150	329	80	-	40,000

FRIALEN safety fittings can be fused with pipes with SDR levels 11 to 17.6. For W 90 > d 225 separate fusion zones per socket side.

Minimum wall thickness s minimum ≥ 3 mm.

Other levels of SDR can be processed on request.

Please note the mandatory labels directly on the product.

DVGW test marks issued: DV-8601AU2248, DV-8606AU2249 and DV-8611AU2250.

W90 SDR 11

Elbow 90°, SDR 11

Areas of Application

The FRIALEN-Elbow W90° is used for all changes of direction in HD-PE pipes.

Assembly Instructions

The fusion of the pipe ends with the FRIALEN-Elbows W90° takes place by FRIALEN-fusing – leakproof and longitudinally strong.

The pipe ends are prepared according to the general installation instructions (see "Assembly Instructions" for "FRIALEN-Safety Fittings for house connections and distribution pipes up to d 225"). This involves removing the oxide skin and cleaning the pipe ends.

Good reasons for using the FRIALEN-Elbows W90°:

- Large coupler depth for ease of pipe guiding (no holding clamps required)
- Extra wide fusion zones
- Maximum stability through great wall thickness
- Cold zones at the front side and in the middle of the coupler
- Exposed heating coil for direct heat transmission to the pipe
- Small annular gap for build-up of optimum joining pressure in the fusion zone
- Contacts safe to touch
- Fusion indicator for visual fusion control
- Durable batch marking
- Individually wrapped for dirt protection
- Additional barcode for tracing back the fitting (Traceability-Coding)