

# SA TL

## Top-loading spigot saddle, SDR 11

Top-loading spigot saddle SA TL SDR 11

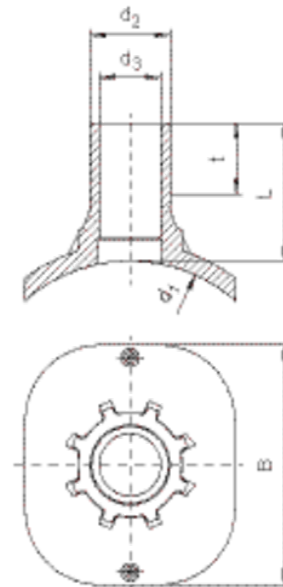
- Gas, water and H<sub>2</sub>
- Maximum pressure: Gas 10 bar, Water 16 bar
- Material: PE 100
- Universal clamping option (top loading):
  - Safe clamping with FRIATOP
  - Universal adaptation to pipe diameter
  - Tapping under pressure possible
- Safety technology
- DVGW test mark: DV-8606AU2249 and DV-8611AU2250

### Note:

Can only be used with the clamping device FRIATOP (Order No. 613350).

For pressure-free tapping, we recommend the drilling device from Hütz & Baumgarten ([www.huetz-baumgarten.de](http://www.huetz-baumgarten.de)).

For tapping under pressure, please contact our hotline: +49 621 486-2325.



PE 100 SDR 11

Maximum permissible working pressure 16 bar (water) / 10 bar (gas)



Reference	d <sub>1</sub>	d <sub>2</sub>	BX	PU	d <sub>3</sub>	L	t	B	Drilling Ø d <sub>a</sub>	Weight kg
615465	250-560	32	5	90	21	109	42	200	20	0,621
615466	250-560	63	5	90	47	109	56	200	46	0,676

FRIALEN spigot saddles  $\leq d 63$  can be fused with pipes of the SDR level 11 and  $> d 63$  to pipes of the SDR level 11 to 17.6. Other SDR levels available on request. Please note the mandatory labels directly on the product. DVGW test marks issued: DV-8606AU2249 and DV-8611AU2250

# SA TL

## Top-loading spigot saddle, SDR 11

### Areas of Application

The FRIALEN-Spigot Saddles SA TL are used for tapping in the depressurised state of gas and water pipes as well as for pressure drainage. Outlet spigot for use with FRIALEN-couplers MB or UB.

SA TL can be used for pipes in the depressurised state as a T-piece with reduced outlet.

### Assembly Instructions

The saddle is clamped onto the pipe with the FRIATOP clamping device (see pricelist "Technical Equipment"). Please read the "Assembly and Operating Instructions for FRIATOP clamping unit (Top-Loading)".

The fusion of the HD-PE distribution pipes and the house connections with FRIALEN-Spigot Saddles SA TL takes place by FRIALEN-fusing – leakproof and longitudinally strong.

The saddle and the outlet spigot have to be prepared according to the general installation instructions (see "Assembly Instructions" for "FRIALEN-Special Technology for laying large bore pipes and relining pipe networks  $\geq d 250$ "). This involves removing the oxide layer and cleaning the pipe covered by the saddle.

Swarfless tapping up to  $\varnothing 46$  mm.

For tapping pressurized pipes a shut off equipment can be used or tapping with the tapping device can be done via a combination of shut off device/KHP-Ball Valve/EFL-Full Faced Flange or shut off device/AQUAFast-Flange.\*

\* (see brochure FRIALEN spigot saddles SA and SA TL: Drilling of HD-PE pipes – pressure free or under operating pressure)

### Good reasons for using the FRIALEN-Spigot Saddles SA TL:

- Compact construction
- Exposed heating element for optimal heat transfer
- Swarfless tapping by tapping equipment of Hütz + Baumgarten
- Leakage free tapping possible by means of a shut off element
- Extra wide fusion zone
- The SA-TL can be applied universally to large HD-PE pipe diameters  $d 250-560$ . This means additional economy due to less material needed and less stock both with suppliers and trade
- Additional barcode for tracing back the underground fitting (Traceability-Coding)